

Projects Update



Sturgeon
C O U N T Y

Gravel Road Improvement Projects - Complete

| SITE # | LOCATION | KM'S |
|--------|--|------|
| 1 | RR 265 NORTH OF HWY 37 | 3.2 |
| 2 | TWP RD 572- RR 240 - RR 241 | 1.6 |
| 3 | RR 230- TWP RD 570 - TWP RD 572 RAIL CROSSING) | 1.5 |
| 4 | RR 260- TWP RD 562 TO TWP RD 564 | 3.2 |
| 5 | RR 260- TWP RD 564 - TWP RD 570 | 3.2 |
| 6 | TWP RD 544- RGE RD 263 TO 26413 | 3.2 |
| 7 | RR 241- HWY 37 - TWP 552 | 3.2 |
| 8 | RR 262- HWY 37 - TWP RD 552 | 3.2 |
| 9 | RR 260- TWP RD 544 - HWY 37 | 3.2 |
| TOTAL | | 25.5 |

Gravel Road Improvement Projects



Bridge Program

| Project | Budget Status | Schedule Status | Note |
|--------------------------------------|---------------|-----------------|---|
| BF74868 (Twp Rd 570 W of Alcomdale) | On-Track | Complete | |
| BF76930 (Twp Rd 552 W of Rge Rd 272) | On-Track | Complete | |
| BF00646 (Rge Rd 262 N of Twp Rd 565) | On-Track | Complete | |
| BF78067 (Rge Rd 235 N of Hwy 651) | On-Track | Complete | |
| BF00889 (Twp Rd 564 E of Hwy 28) | On-Track | Complete | Installation complete, paving to occur this week along with road work |
| BMC | On-Track | Caution | 17 of 18 bridge sites completed. Final site delayed by water levels. |

BF74868–Twp Rd 570 W of Alcomdale



BF76930 – Twp Rd 552 W of RR 272



BF 00646 – Rge Rd 262 N of Twp Rd 565



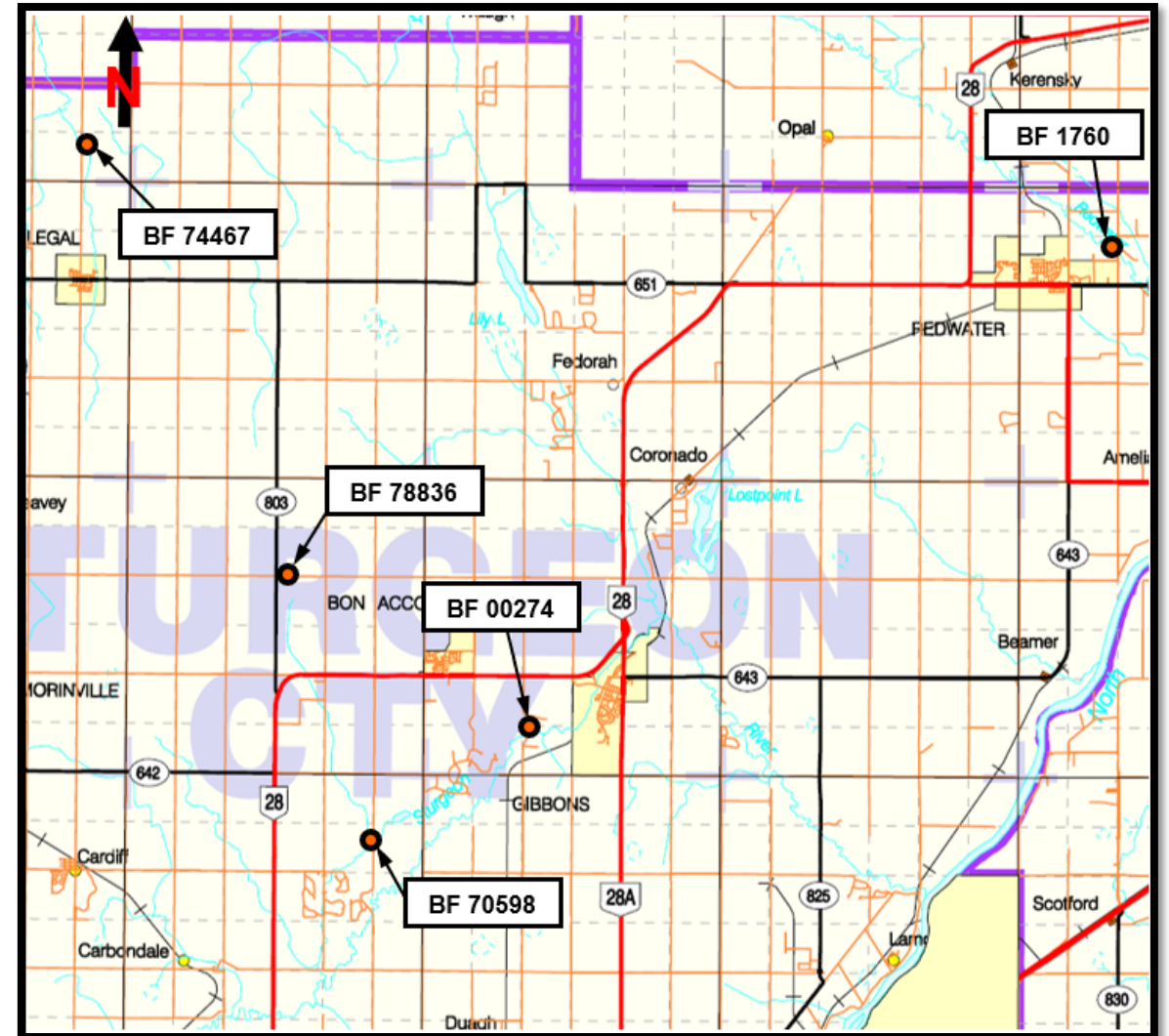
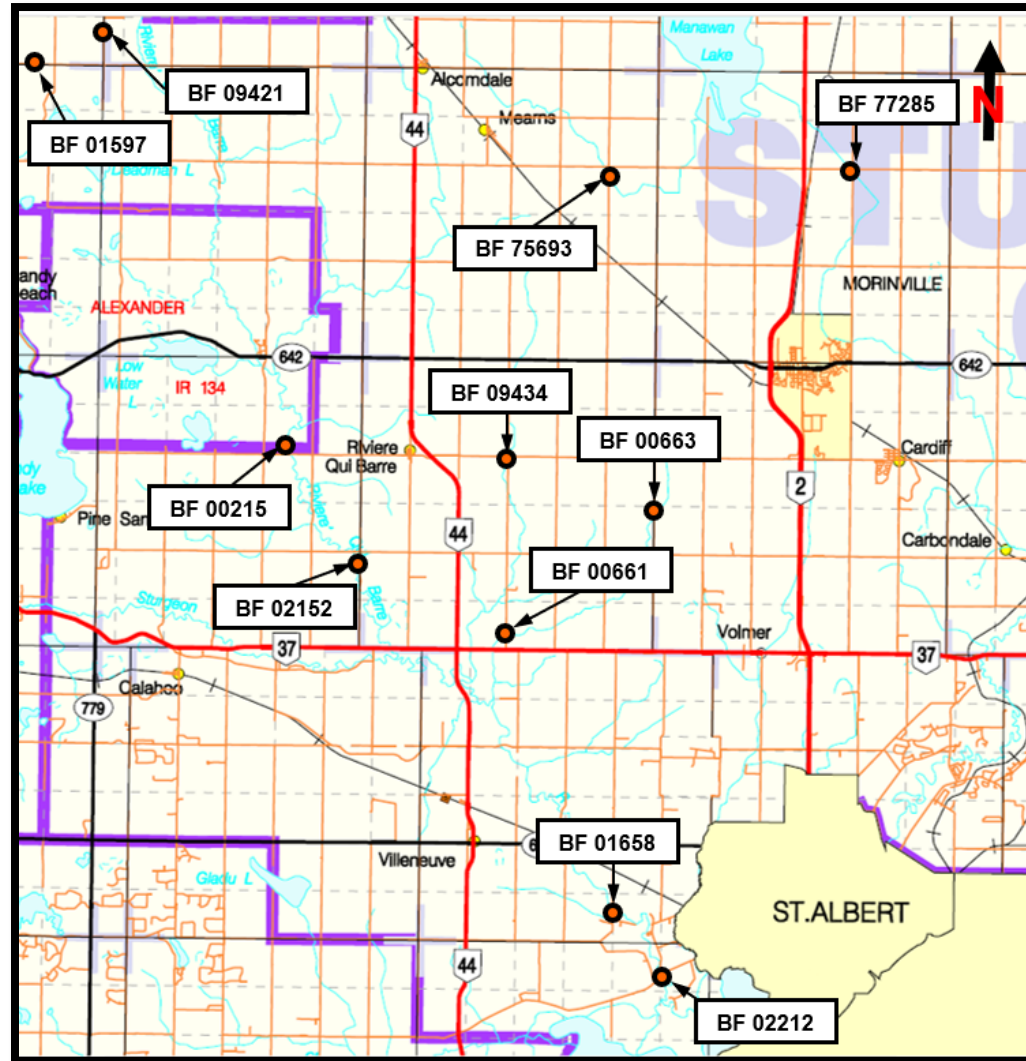
BF 78067 – Rge Rd 235 N of Hwy 651



BF 00889 – Twp Rd 564 E of Hwy 28



Bridge Maintenance Contract (BMC)



Road Projects

| Project | Budget Status | Schedule Status | Note |
|---|---------------|-----------------|--|
| Twp Rd 564 - E of Hwy 28 to Rge Rd 231 | On-Track | On-Track | Placement of asphalt throughout (1 st lift) to be completed this year |
| Woodridge | On-Track | On-Track | Placement of asphalt throughout (1 st lift) completed this year with partial 2 nd lift |
| Rge R 250 Roundabout | On-Track | On-Track | Concrete and paving work on-track for completion this year |
| Cardiff Park / Rge Rd 251 | On-Track | On-Track | Placement of asphalt throughout (2 nd lift) to be completed this year |
| Twp Rd 570 - Rge Rd 230 to 224 (Gravel) | On-Track | On-Track | Construction substantially completed |

Twp Rd 564 – Rge Rd 231 to W of Hwy 28



Woodridge Subdivision Surfacing



Rge Rd 250 Roundabout



Cardiff Park Roads and Rge Rd 251



Twp Rd 570 - Rge Rd 230 to 224



Capital Drainage Program

| Project | Budget Status | Schedule Status | Note |
|----------------|---------------|-----------------|-------------------------------------|
| SIP Drainage | On-Track | Completed | Construction complete, in warranty. |
| Waterdale Park | On-Track | On-Track | Final landscaping underway |

SIP Drainage - Sturgeon Crescent Improvements



Waterdale Park – Landscaping Enhancements



Pavement Preservation Program

| Project | Budget Status | Schedule Status | Note |
|--|---------------|-----------------|-----------------------------------|
| Alcomdale -Micro-Surfacing | On-Track | Complete | Deficiency spot repairs completed |
| Lower Manor Estates - Micro-Surfacing | On-Track | Complete | Deficiency spot repairs completed |
| Silverchief - Micro-Surfacing | On-Track | Complete | Deficiency spot repairs completed |
| Skylglen Air Park - Micro-Surfacing | On-Track | Complete | Deficiency spot repairs completed |
| Hewitt Estates - Micro-Surfacing | On-Track | Complete | Deficiency spot repairs completed |
| Sturgeon Valley Vista - Micro-Surfacing | On-Track | Complete | Deficiency spot repairs completed |
| Hu Haven - Micro-Surfacing | On-Track | Complete | Deficiency spot repairs completed |
| Lily Lake Rd - Twp Rd 672 to Hwy 651 - Chipseal | On-Track | Complete | |
| Opal Rd - Twp Rd 572 to Hwy 28 - Chipseal | On-Track | Complete | |
| Dover Estates - Mill and Overlay | On-Track | Complete | |
| Hewitt Drive - Mill and Overlay | On-Track | Complete | |
| Valley Drive - Mill and Overlay | On-Track | Complete | |
| Valour Ave - Mill and Overlay | On-Track | Complete | |
| Turfside Park - Mill and Overlay | On-Track | Complete | |

Micro-Surfacing



Alcomdale



Hu Haven



Silverchief



Skyglen Air Park



Silverchief



Lower Manor Estates

Chipseal



Opal Road



Opal Road



Lily Lake Road

Mill and Overlay



Dover Estates



Hewitt Estates



Hewitt Estates



Sturgeon Valley Vista