

# 2025 Registered Ditches Update

Transportation & Engineering Services

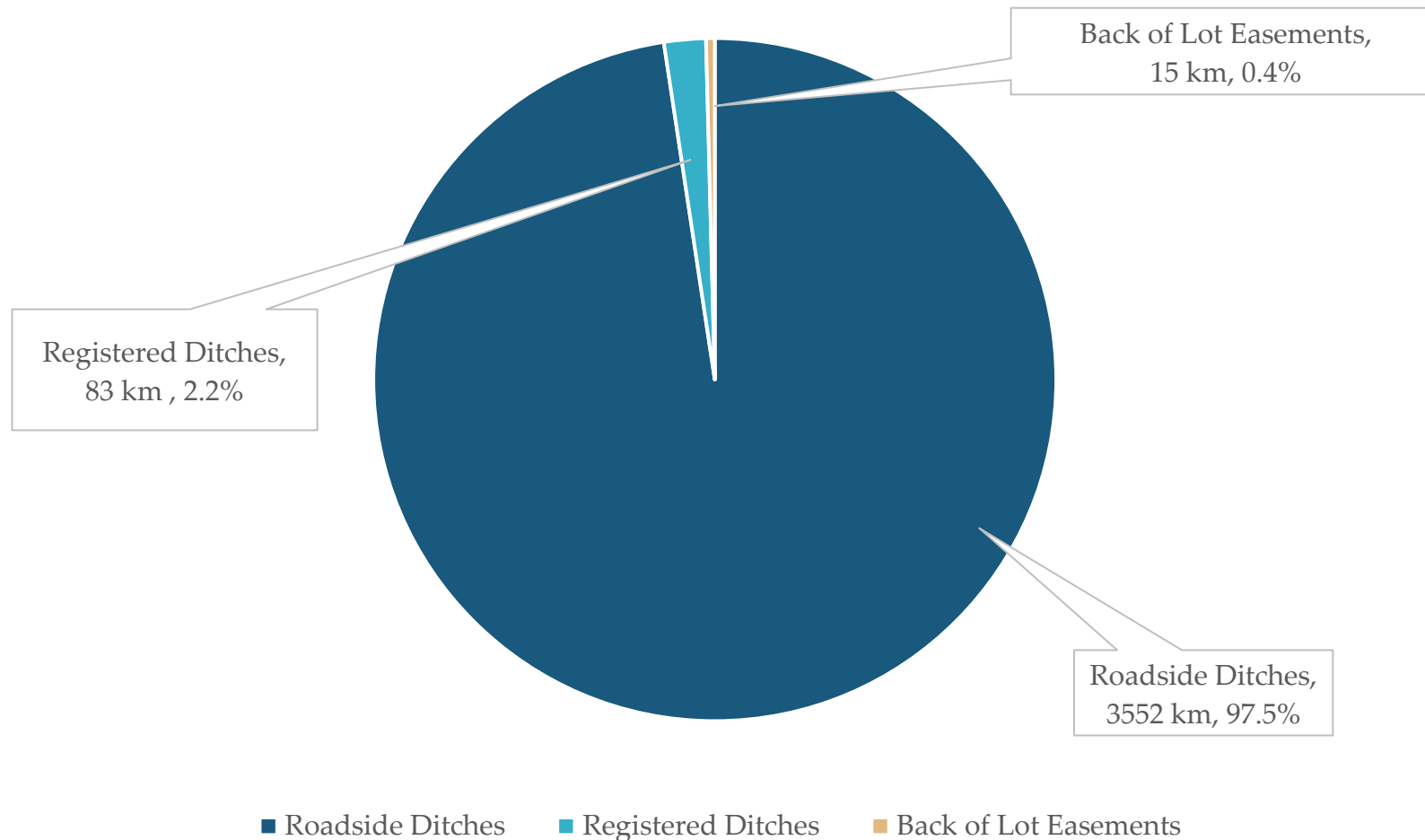
---



Sturgeon  
C O U N T Y

# Drainage Network

Of 3,644km of ditches, registered ditches represents 2.2% of the drainage network in lineal kilometers across 37 separate ditches.



# Background

---

1. 2023 Registered ditch asset management study.
2. Inspection and prioritization.
3. Maintenance.
4. Evaluation of new candidates.

# Administrative modernization

---

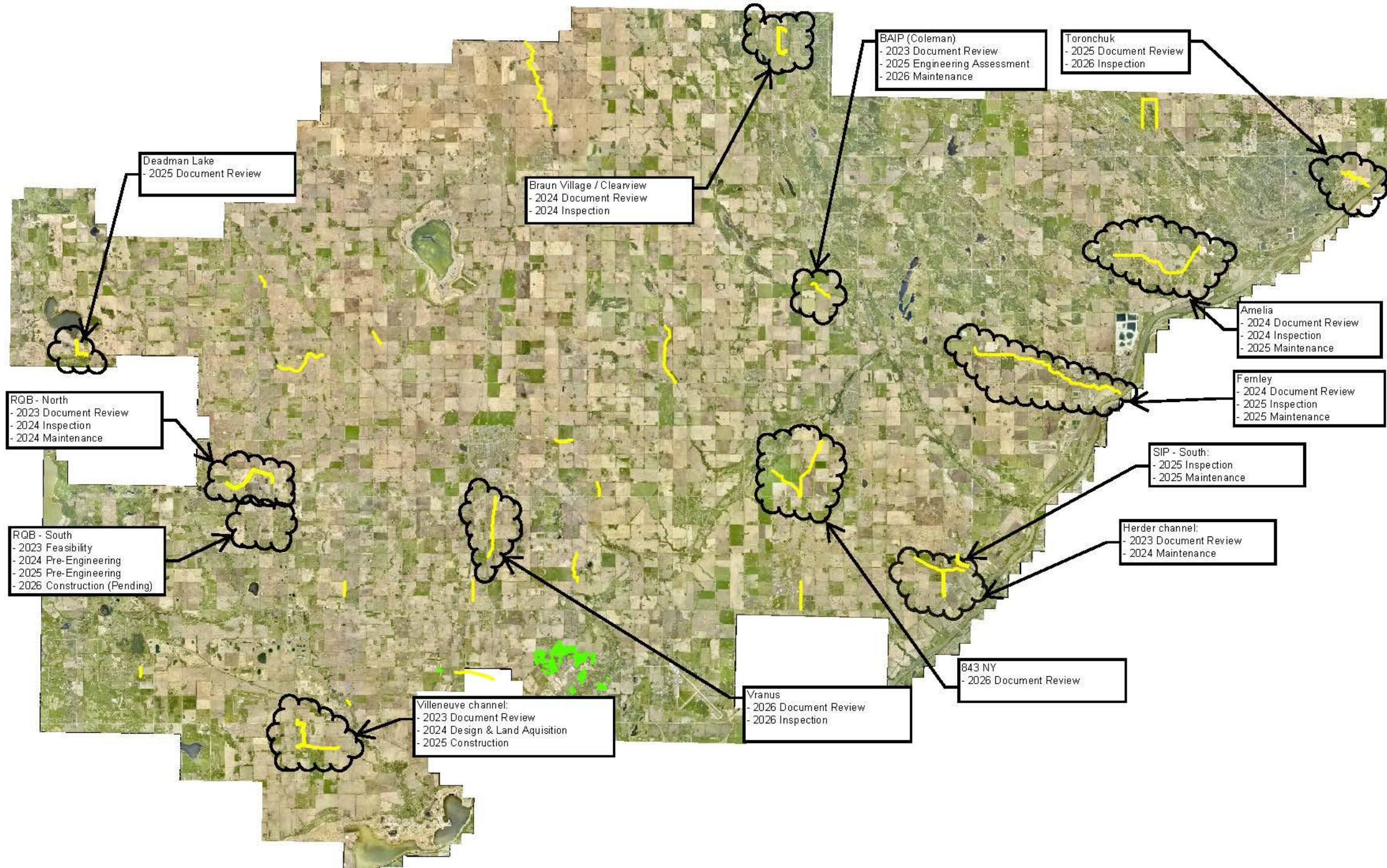
1. Do we have a maintenance responsibility?
2. What is the current condition?
3. What should we maintain?
4. Should we be the maintenance responsibility?

# What have we done so far?

---

- Digitization of all existing documents (oldest is from 1906).
- GIS inspection platform.
- Internal document review program.
- Internal field inspection program.
- Maintenance program (contractor and internal).
- Engineering assessment program.
- Ongoing Capital collaboration for construction projects.







# Metrics 2023-2026

Item	2023		2024		2025		2026	
Document Review	Location	Lineal M	Location	Lineal M	Location	Lineal M	Location	Lineal M
	Herder	3054	Amelia	6146	Toronchuk	2313	Vranus	3646
	RQB - North	4056	Fernley	10068	Deadman Lake	1545	843 NY	6079
	BAIP	1432	Braun Village	1686	Legal	5975	-	-
Total	-	8542	-	17900	-	9833	-	9725
Inspections	Location	Lineal M	Location	Lineal M	Location	Lineal M	Location	Lineal M
	Herder	1200	Amelia	6146	SIP-South	1100	Legal	5975
	-	-	RQB - North	4056	Fernley	10068	Vranus	3646
	-	-	Braun Village	1686	-	-	Toronchuk	2313
Total	-	1200	-	11888	-	11168	-	11934
Engineering Assessments	Location	Lineal M	Location	Lineal M	Location	Lineal M	Location	Lineal M
	County - RDAM	62000	RQB - South	1500	BAIP	1432	Braun Village	1686
Total		62000		1500		1432	-	1686
Maintenance	Location	Lineal M	Location	Lineal M	Location	Lineal M	Location	Lineal M
	-	-	Herder	1200	Amelia	80	BAIP	TBD
	-	-	RQB - North	220	Fernley	1000	Legal	TBD
	-	-	-	-	SIP - South	2023	Fernley	TBD
Total	-	0	-	1420	-	3103	-	0
Construction	Location	Lineal M	Location	Lineal M	Location	Lineal M	Location	Lineal M
	Riverside Park	400	-	-	Villeneuve	1410	RQB - South	1500
Total	-	400	-	0	-	1410	-	1500

# 2024 Maintenance site (RQB - North)

---





# Images of 2024 maintenance (Herder)

---



# Path forward

---

- Inspection target cycle.
- Maintenance target cycle.
  - Vegetation management.
  - Key channel maintenance.
  - Key crossings maintenance/replacement.
- Addressing administrative items:
  - Land titles / caveats, easements, Water license's.
  - Investigating maintenance responsibilities.

# Questions?

---



Sturgeon  
C O U N T Y