

2025 Capital Updates Hand Out

Informal Briefing of Council
September 2, 2025



Sturgeon
C O U N T Y

Capital Program Status - Summary

Project Name / Location	Project Status	Written Update	Contractor	Consultant
Twp Rd 554 – 3.2kms W of Hwy 2	Substantial completion	Project is substantially complete	E-Construction	N/A
Rge Rd 232 – Hwy 37 to Pilon Creek	Substantial completion	Project is substantially complete	Knelsen Sand and Gravel	Tetra Tech
Rge Rd 231 – Gibbonslea to Lost Point Lake	Substantial completion	Project is substantially complete	Knelsen Sand and Gravel	N/A
Boysdale Rd / Rge Rd 223	Substantial completion	Project is substantially complete	Knelsen Sand and Gravel	MPE
Sturgeon Valley Estates / Rge Rd 230	Substantial completion	Project is substantially complete	Knelsen Sand and Gravel	McElhanney
Lamoureux Dr – Hwy 15 to Rge Rd 224A	Substantial completion	Project is substantially complete	TBL Construction	WSP
Vista Rd / Rge Rd 230	On-Track	Project is underway	TBL Construction	ROHI
Rge Rd 232 – Twp Rd 572 to 573	Substantial completion	Project is substantially completed	Prairie North	WSP
Rge Rd 220 – Twp Rd 580 to Redwater	On-Track	Work to commence this fall	TBD	N/A
SIP Drainage – Phase 3	Substantial completion	Project is substantially completed	TBL Construction	McElhanney
Villeneuve Drainage Phase 4A	On-Track	Project is underway	Delta Valley	MPA Engineering

Capital Program Status - Summary

Project Name / Location	Project Status Written Update		Contractor	Consultant
Hillsborough Drainage	On-Track	Construction planned for Fall	TBD	McElhanney
Starkey Pedestrian Bridge and Pathway	On-Track	Primary scope is underway	Multiple	MPE
BF73344 – Rge Rd 252 N of Twp Rd 580	Substantial completion	Project is substantially completed	Abacus Enterprises	ABMK Engineering
BF73756 – Rge Rd 235 N of Twp Rd 570	Substantial completion	Project is substantially completed	Formula Alberta	WSP
BF00774 – Twp Rd 552 W of Rge Rd 242	On-Track	Construction is underway	TerraPro	MPA Engineering
BF02404 – Rge Rd 262 N of Hwy 37	Caution	Project tentatively scheduled for October due to legacy land matter	TerraPro	MPA Engineering
Casa Vista Pedestrian Bridge	On-Track	Contract award in progress.	TBD	MPA Engineering

Twp Rd 554 – 3.2kms W of Hwy 2

Project Status: Substantial completion

Written Update:

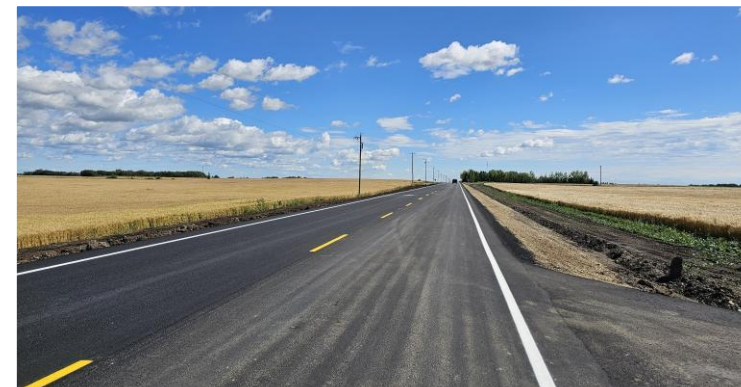
Primary project scope is completed.

Program: Collector Reconstruction

Project Manager: Khalil Shaikh

Contractor: E-Construction

Consultant: N/A



Rge Rd 232 – Hwy 37 to Pilon Creek

Project Status: Substantial completion

Written Update:

Primary project scope is completed.

Program: Collector Reconstruction

Project Manager: Ty Fergel

Contractor: Knelsen Sand and Gravel

Consultant: Tetra Tech



Rge Rd 231 – Gibbonslea to Lost Point Lake

Project Status: Substantial completion

Written Update:

Primary project scope is complete

Program: Collector Reconstruction

Project Manager: Khalil Shaikh

Contractor: Knelsen Sand and Gravel

Consultant: N/A



Boysdale Rd / Rge Rd 223

Project Status: Substantial completion

Written Update:

Primary project scope is completed.

Program: Collector Reconstruction / Rehabilitation

Project Manager: Adnan Kamal

Contractor: Knelsen Sand and Gravel

Consultant: MPE



Sturgeon Valley Estates / Rge Rd 230

Project Status: Substantial completion

Written Update:

Primary project scope is completed.

Program: Rehabilitation / Pavement Preservation

Project Manager: Scot Williams

Contractor: Knelsen Sand and Gravel

Consultant: McElhanney



Lamoureux Dr – Hwy 15 to Rge Rd 224A

Project Status: Substantial completion

Written Update:

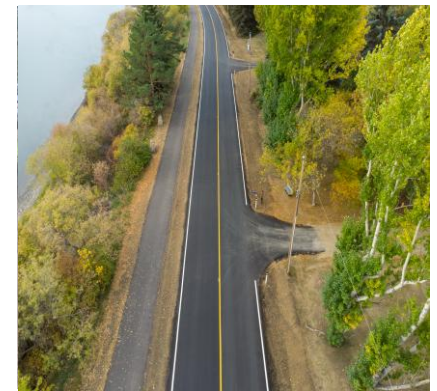
Primary project scope is completed.

Program: Rehabilitation

Project Manager: David Becker

Contractor: TBL Construction

Consultant: WSP



Vista Rd / Rge Rd 230

Project Status: On-Track

Written Update:

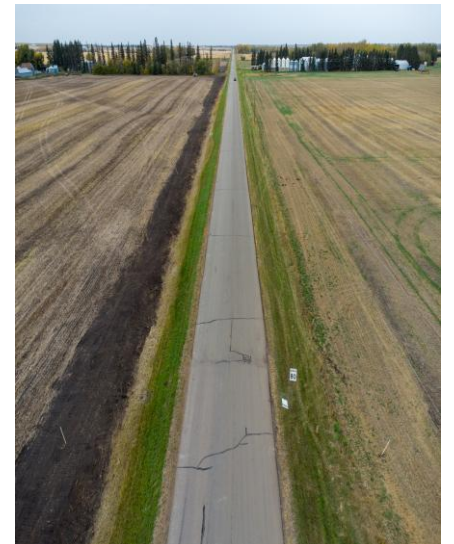
Project underway.

Program: Rehabilitation

Project Manager: Paul Theoret

Contractor: TBL Construction

Consultant: ROHI



Rge Rd 232 – Twp Rd 572 to 573

Project Status: Substantial completion

Written Update:

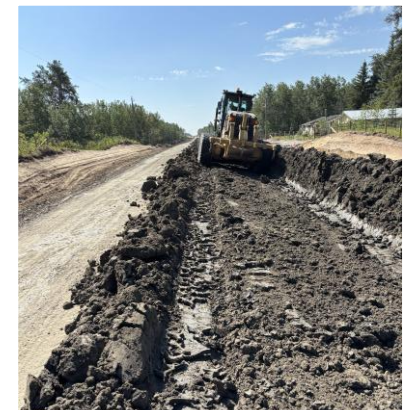
Primary project scope is completed.

Program: Local Roads

Project Manager: Paul Theoret

Contractor: Prairie North

Consultant: WSP



Rge Rd 220 – Twp Rd 580 to Redwater

Project Status: On-Track

Written Update:

Work to commence this fall

Program: Local Roads

Project Manager: Paul Theoret

Contractor: TBD

Consultant: N/A



SIP Drainage – Phase 3

Project Status: Substantial completion

Written Update:

Primary project scope is completed.

Program: Drainage

Project Manager: David Becker

Contractor: TBL Construction

Consultant: McElhanney



Villeneuve Drainage – Phase 4A

Project Status: On-Track

Written Update:

Project is underway

Program: Drainage

Project Manager: Scot Williams

Contractor: Delta Valley

Consultant: MPA Engineering



Hillsborough Drainage

Project Status: On-Track

Written Update:

Construction planned for Fall

Program: Drainage

Project Manager: Paul Theoret

Contractor: TBD

Consultant: McElhanney



Starkey Pedestrian Bridge and Pathway

Project Status: Caution

Written Update:

Primary scope is underway

Program: Open Spaces

Project Manager: Stephen Hinton /
Karolina Drabik / Ty Fergel

Contractor: Wilco Contractors
Northwest Inc.

Consultant: MPE



BF73344 – Rge Rd 252 N of Twp Rd 580

Project Status: Substantial completion

Written Update:

Primary project scope is completed.

Program: Bridges

Project Manager: Mark Guerette

Contractor: Abacus Enterprises

Consultant: ABMK Engineering



BF73756 – Rge Rd 235 N of Twp Rd 570

Project Status: Substantial completion

Written Update:

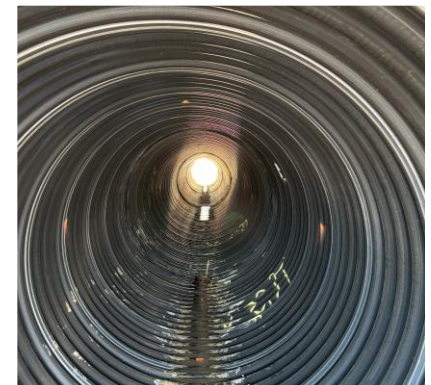
Primary project scope is completed.

Program: Bridges

Project Manager: Mark Guerette

Contractor: Formula Alberta

Consultant: WSP



BF00774 – Twp Rd 552 W of Rge Rd 242

Project Status: On-Track

Written Update:

Construction underway

Program: Bridges

Project Manager: Mark Guerette

Contractor: TerraPro

Consultant: MPA Engineering



BF02404 – Rge Rd 262 N of Hwy 37

Project Status: Caution

Written Update:

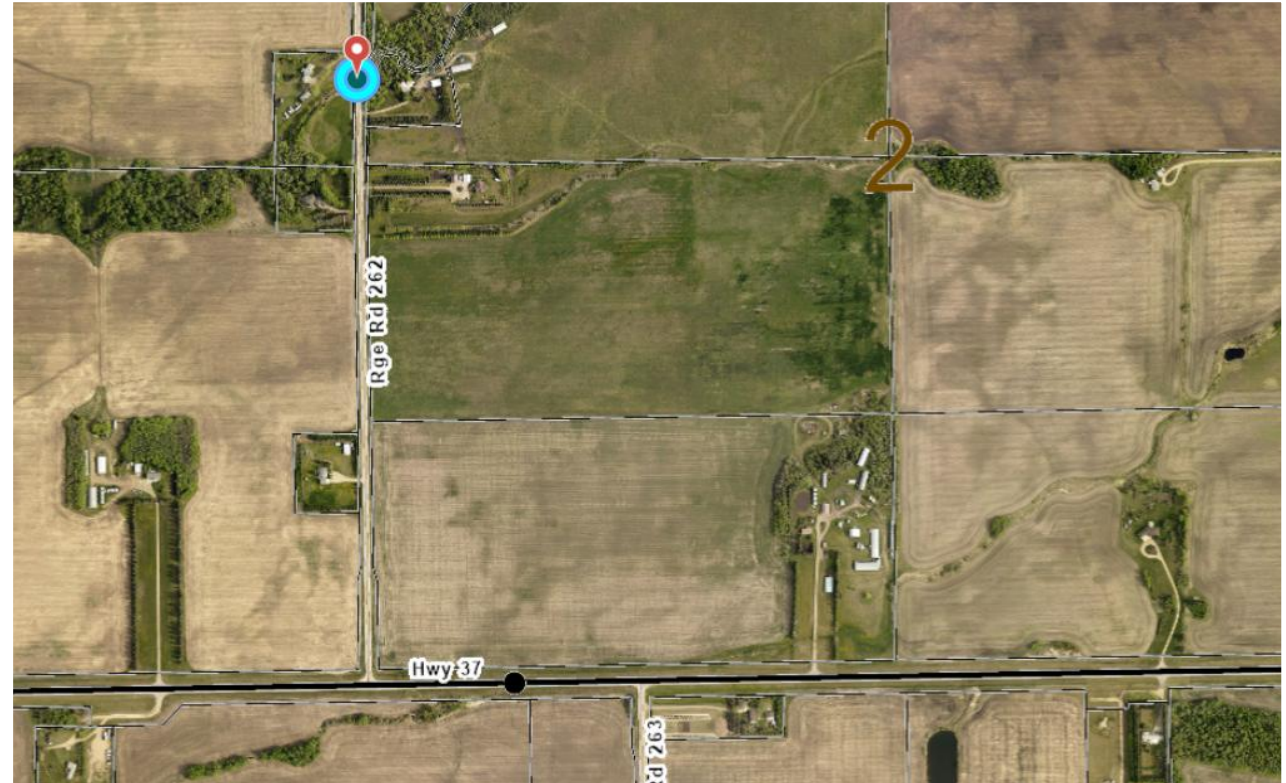
Project tentatively scheduled for October due to legacy land matter

Program: Bridges

Project Manager: David Becker

Contractor: TerraPro

Consultant: MPA Engineering



Casa Vista Pedestrian Bridge

Project Status: Caution

Written Update:

Prior procurements were not successful. Exploring alternative option for construction early next year.

Program: Bridges / Open Spaces

Project Manager: Mark Guerette

Contractor: TBD

Consultant: MPA Engineering

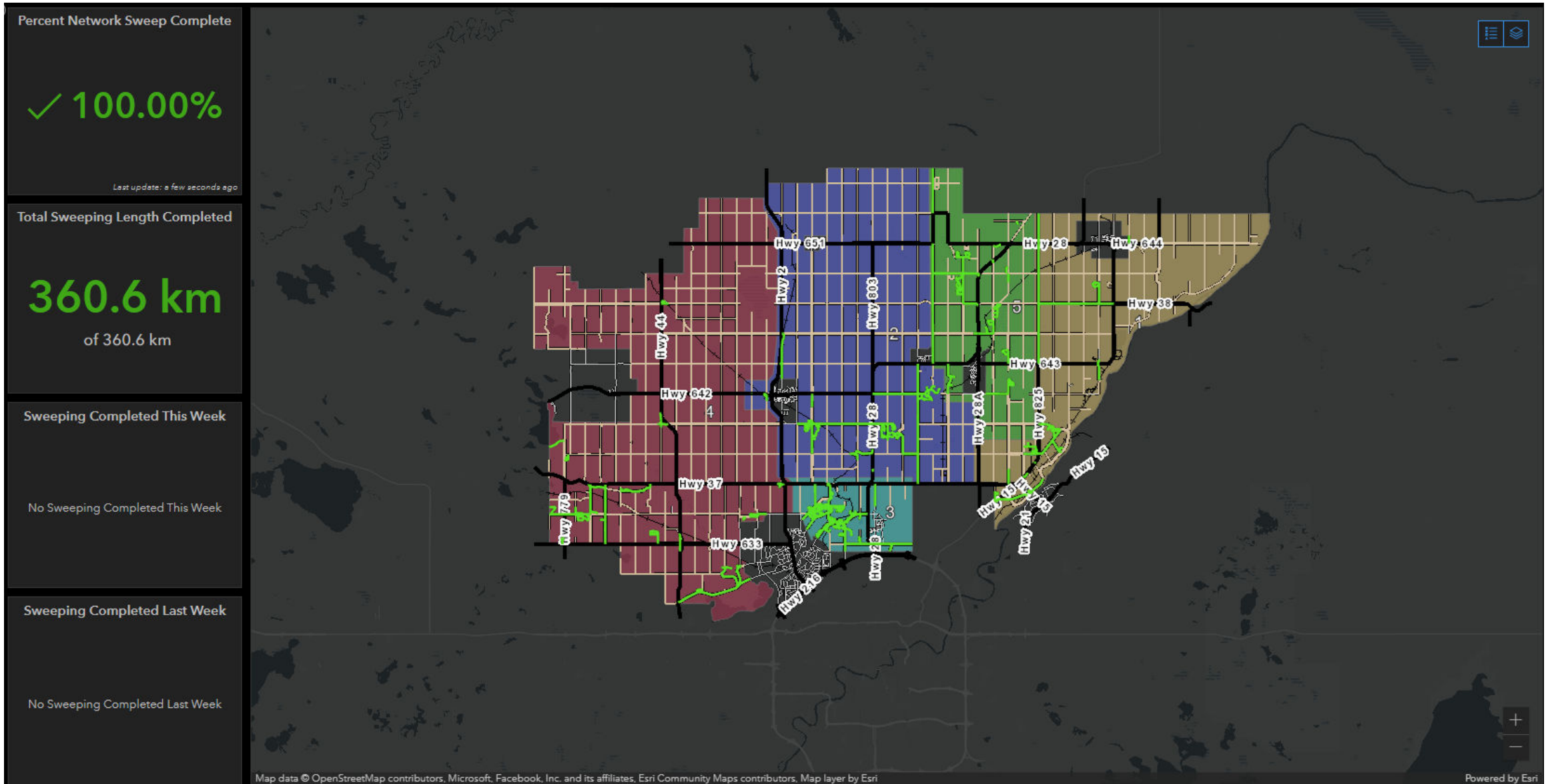


2025 Operations Updates Hand Out

Informal Briefing of Council
September 2, 2025

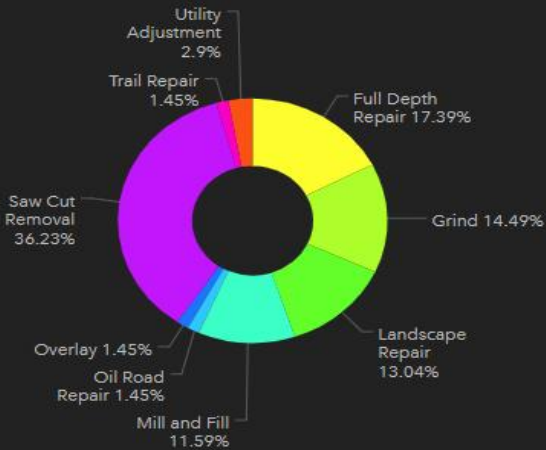


Street Sweeping Completed



Asphalt Maintenance

Planned Asphalt Repair by Type



Full Depth Repair	12	Grind	10
Landscape Repair	9	Mill and Fill	8
Oil Road Repair	1	Overlay	1
Saw Cut Removal	25	Trail Repair	1
Utility Adjustment	2		

Repair Locations Completed

72

Internal Maintenance

Asphalt Tonnage Placed

532.2t

Internal Contract

Work Days Remaining - 2025

49

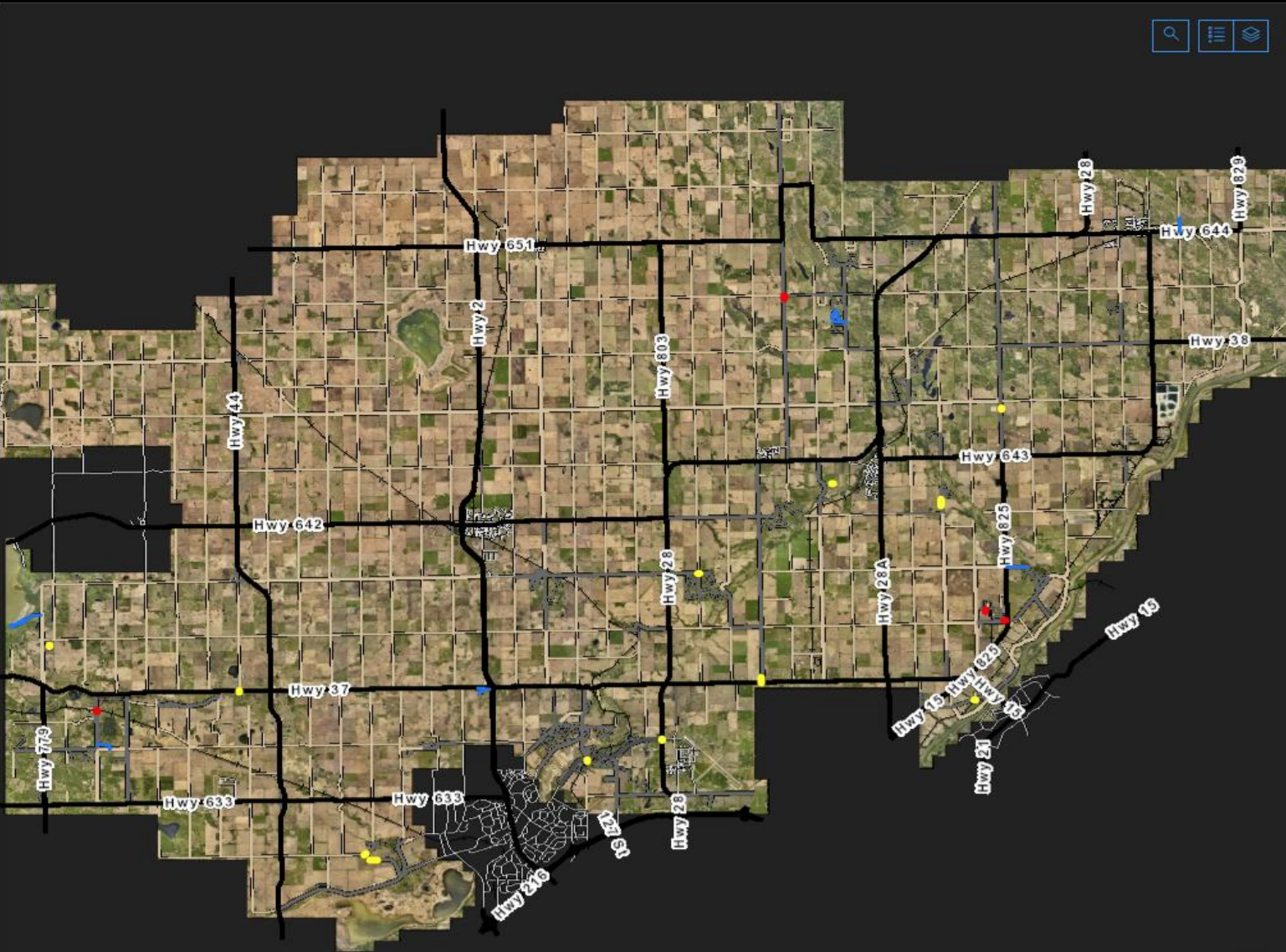
INTERNAL FORCES

Internal Repairs Outstanding

59

Contractor Repairs Outstanding

6



Pothole Patching

Pothole Repair - Current Year

Potholes From Last Month or Older

20



New Potholes



Potholes Repaired This Week



Potholes Repaired This Year



Potholes Repaired Last Year



Garbage

New Garbage Sites

1

New Sites - Last 14 Days

2025-08-20, 2:38 p.m. A broken cabinet, a dog bed, pieces of cabinet(?).

Last update: a few seconds ago

Sites over 14 Days Old

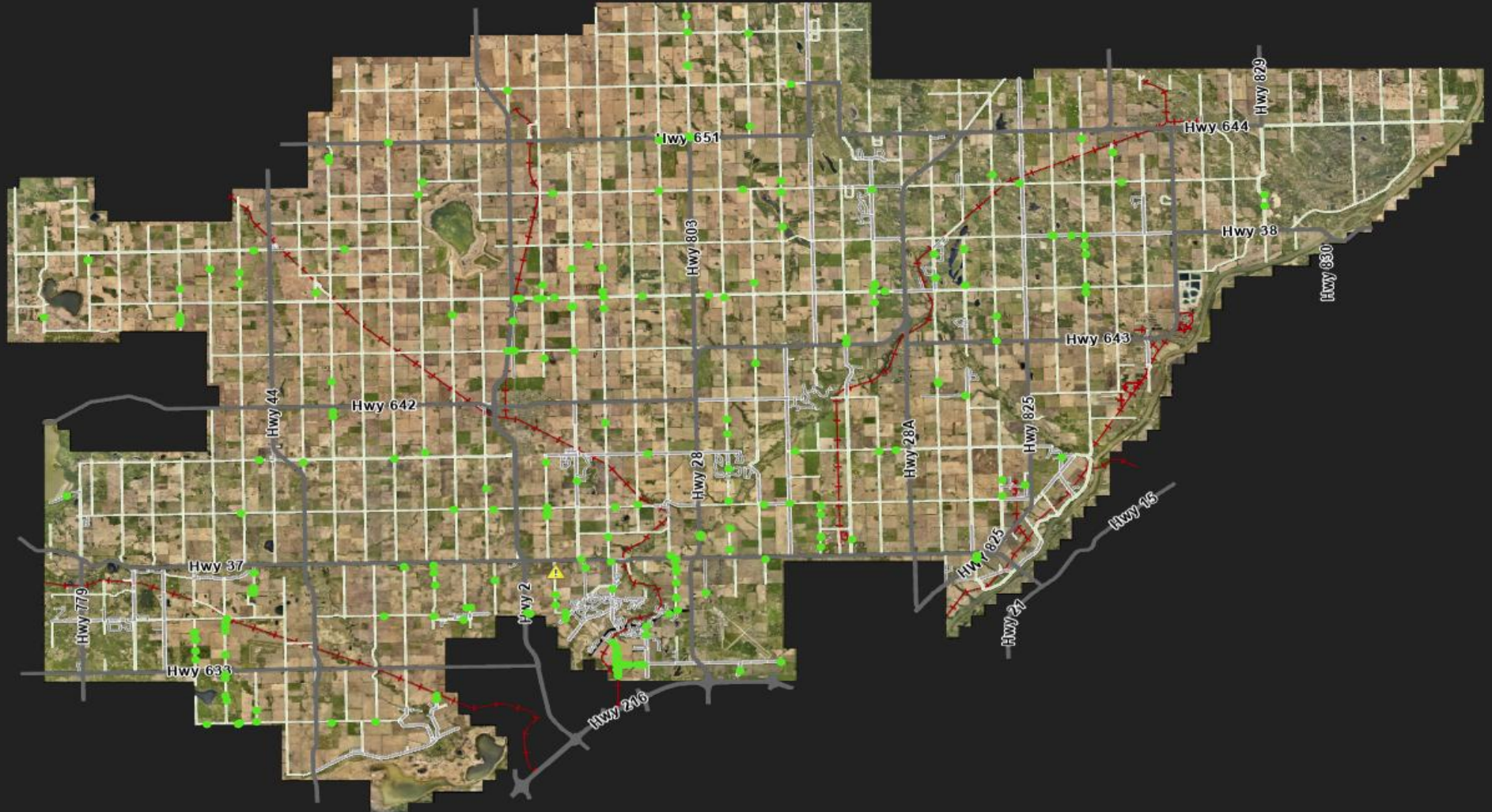
No data

Sites Completed This Year

250

Sites Completed Last 7 Days

6



Signs

Current Year Sign Maintenance Status

Sign Posts in Service

9,000

Last update: a few seconds ago

Regulatory Signs in Service

3,121

Last update: a few seconds ago

Warning Signs in Service

4,007

Last update: a few seconds ago

Information Signs in Service

3,086

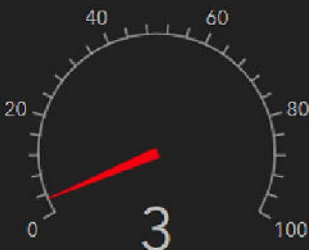
Last update: a few seconds ago

Signs Leaning



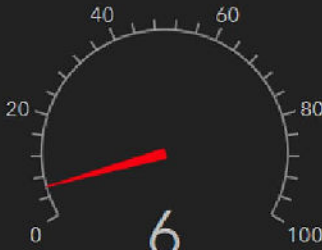
Last update: a few seconds ago

Brush Limbing Required



Last update: a few seconds ago

Sign Replacements Required



Last update: a few seconds ago

Signs Installed This Year

541

Last update: a few seconds ago

Sign Maintenance Events This Year

969

Last update: a few seconds ago

Signs Damaged



Last update: a few seconds ago

Signs Missing



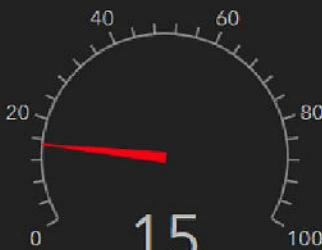
Last update: a few seconds ago

Signs Waiting for Locates



Last update: a few seconds ago

Signs Ready for Install



Last update: a few seconds ago

Capital Project ID Signs

27
In Service

Last update: a few seconds ago

Annual Sign Inspections Completed This Year

737 or 8.189%
of 9,000 sign facilities

Last update: a few seconds ago

Gauge

List

Brushing

Brushing Completed This Year

24,040
meters

Last update: 2 minutes ago

Safety and High Risk

3

Sites Completed

Last update: 2 minutes ago

Roadside

408

Sites Completed

Last update: 2 minutes ago

Major Projects

7

Sites Completed

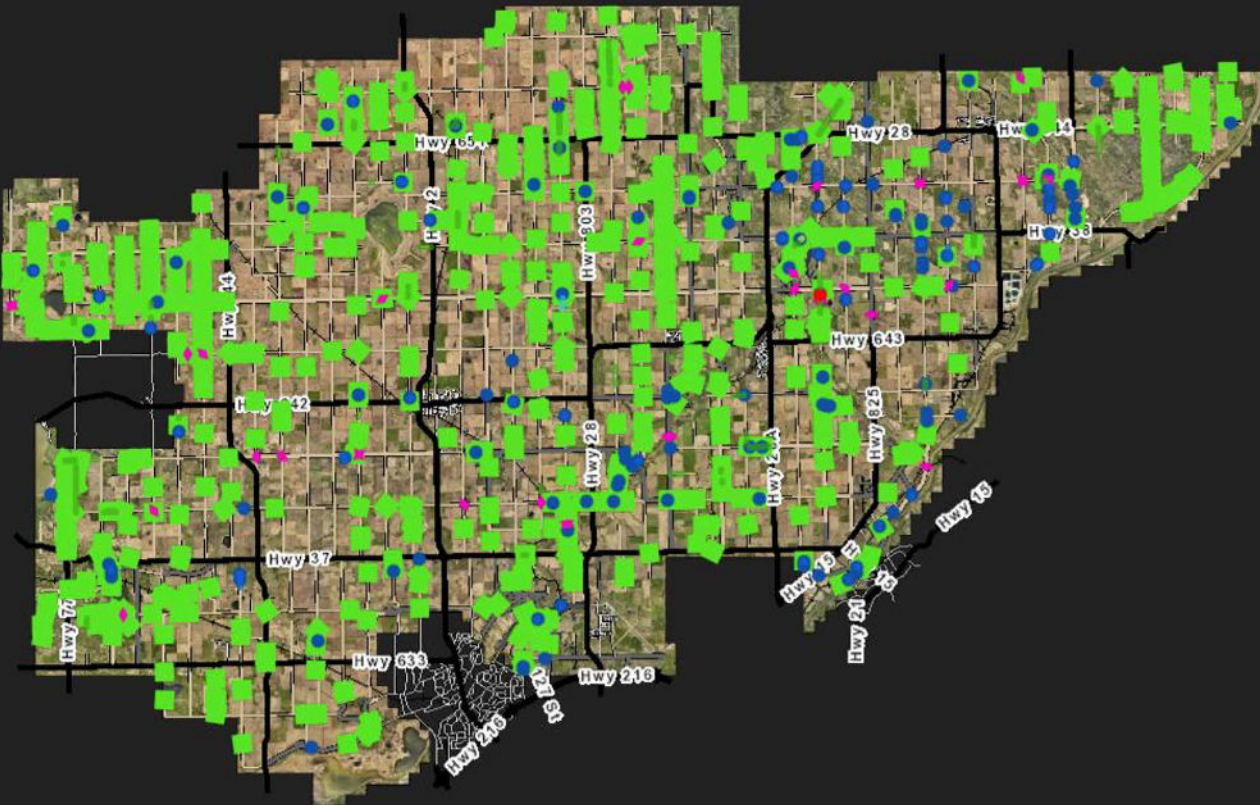
Last update: 2 minutes ago

Sightlines

32

Sites Completed

Last update: 2 minutes ago



Legend

New Segments Edit

Project Type

- Safety & High Risk
- Roadside Brushing
- Sightline Brushing
- Drainage
- Major Project
- Railway Sightline
- Utility Row

Brushing Segment Points

Safety & High Risk

Sightline Brushing

Roadside Brushing

Completed Sites

TransportationNetwork

Labels

- Province, Arterial, Province
- Sturgeon, Arterial, Sturgeon
- Sturgeon, Collector, Sturgeon
- Sturgeon, Local Road, Sturgeon
- RES, Local Road, RES; Private, Local Road, Private; URB, Access Road, URB;

Dust Suppression - Calcium

Initial calcium application complete

Calcium Dust Suppression Statistics - Initial Application Current Year

Total Active Calcium Sites:

471

Total Calcium Length

67,503
meters

Total Meters Completed

36,479

Total Meters

Meters Today

Calcium Sites Staked



Calcium Sites Applied



Private Sites

289

County Sponsored Sites

89

Externally Sponsored Sites

95

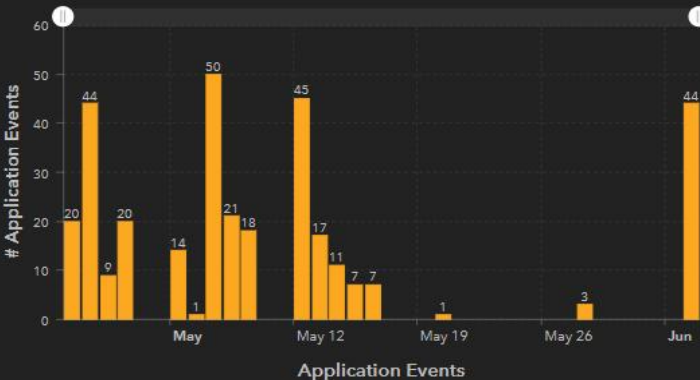
Sites Requiring Gravel

32

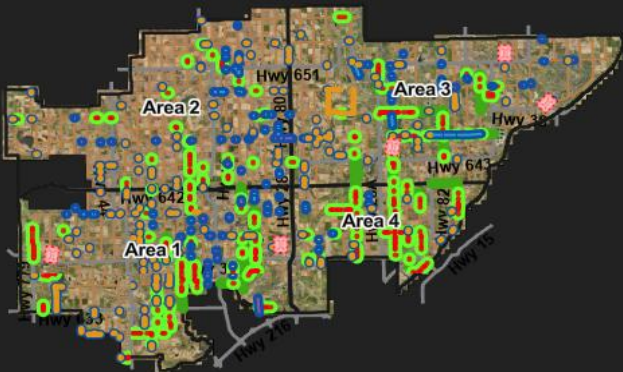
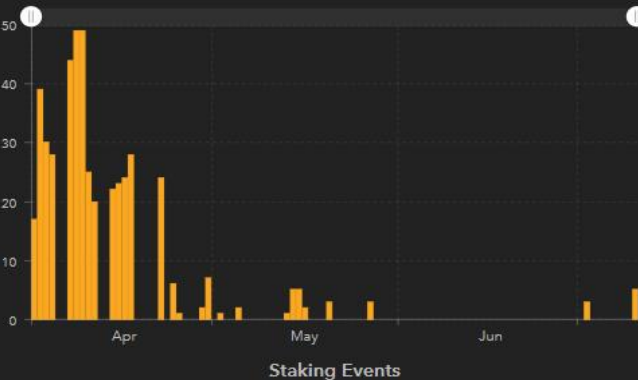
Select One or More Chart Bars for Total Daily Meters

78,798.9
meters

Calcium Application Chart

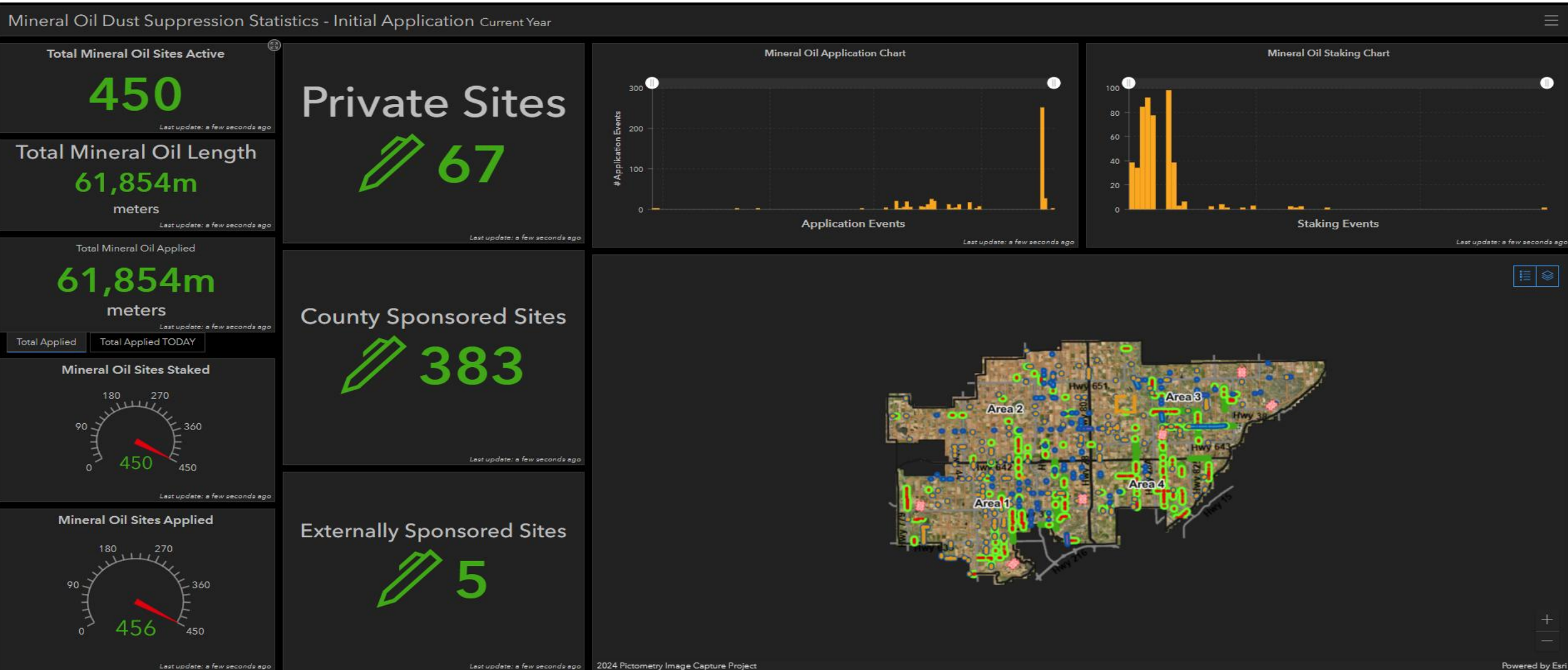


Calcium Staking Chart



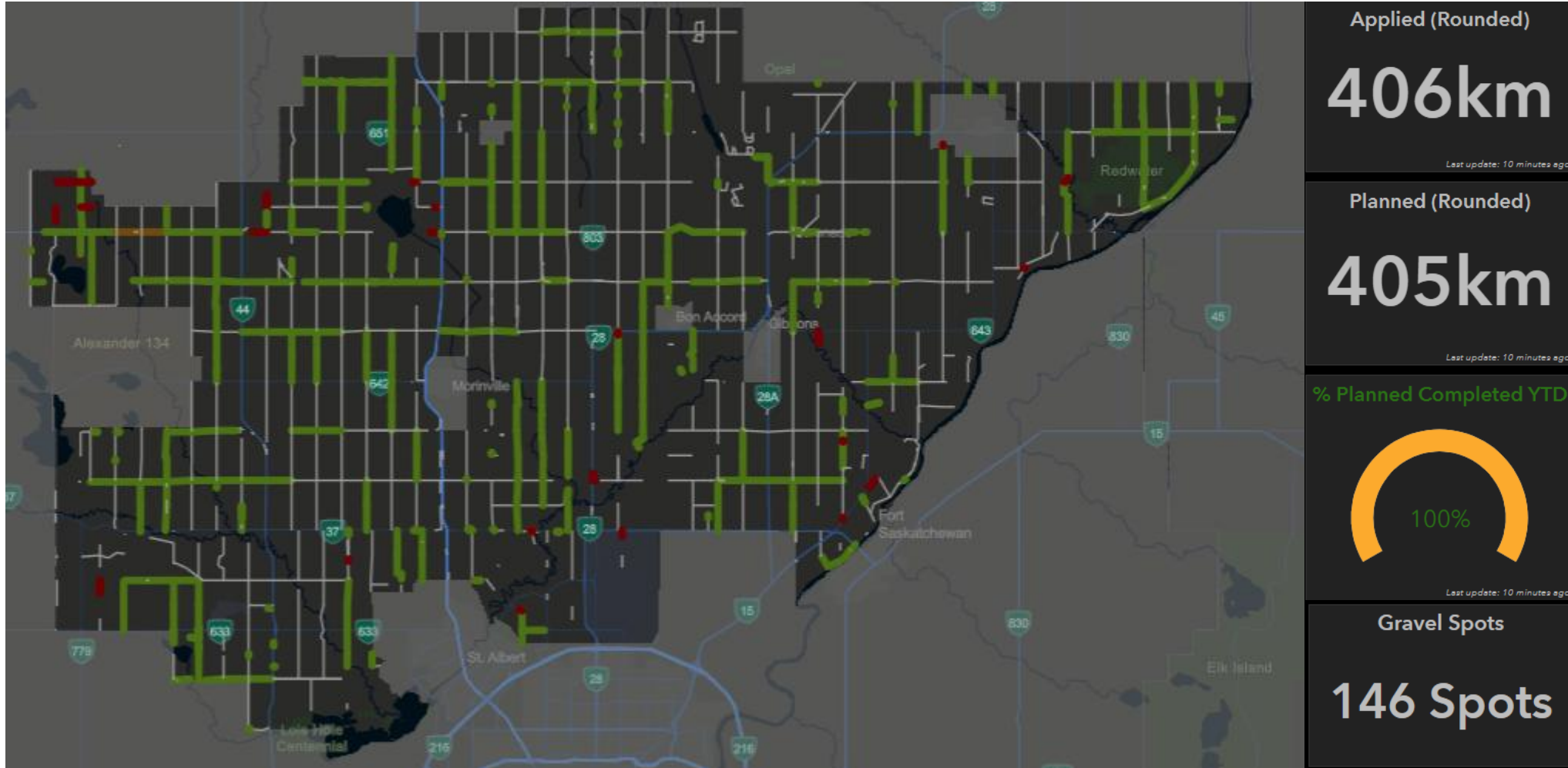
Dust Suppression – Mineral Oil

Mineral Oil application Complete
New: Introduction of millings with the mineral oil



Road Graveling

In Progress



Gravel Road Improvement Projects

BUNDLE A- SHOULDER PULLING AND STABILIZATION

BUNDLE 'A'

SITE #	LOCATION	STATUS	% COMPLETE
1-A	TWP 570- RR 272 - RR273	COMPLETE	100%
2-A	TWP 570- RR 273 - RR274	COMPLETE	100%
3-A	RR 241- HWY 28 - TWP RD 564	COMPLETE	100%
4-A	RGE RD 261 TWP RD 554- HWY 642	COMPLETE	100%
5-A	RR 260- TWP 552 - TWP 554	COMPLETE	100%
6-A	KURLUK BLVD- TURNAROUND BULB	COMPLETE	100%
7-A	RGE RD 263- HWY 37 - TWP RD 552	COMPLETE	100%



Gravel Road Improvement Projects

BUNDLE B- FROST BOIL REPAIRS

BUNDLE 'B'

SITE #	LOCATION	STATUS	% COMPLETE
1-B	55220 RR 231	COMPLETE	100%
2-B	55225 RGE RD 231	COMPLETE	100%
3-B	56307 RR 231	COMPLETE	100%
4-B	56208 RGE RD 231	COMPLETE	100%
5-B	22410 TWP RD 564	COMPLETE	100%
6-B	22507 TWP RD 564	COMPLETE	100%
7-B	23505 TWP RD 572	COMPLETE	100%
8-B	23512 TWP RD 572	COMPLETE	100%
9-B	54508 RGE RD 255	COMPLETE	100%
10-B	54520 RGE RD 255	COMPLETE	100%
11-B	57012 RGE RD 234	COMPLETE	100%
12-B	56119 RGE RD 251	COMPLETE	100%



Category	Planned	Complete	%
Culvert Replacements (#)	119	94	79%
Ditching (m)	11973	7605	64%
Erosion Repairs (#)	5	4	80%
Culvert Maintenance (#)	163	157	96%
Flushing (#)	30	0	0%
Brushing (m)	577	277	48%
Curb, Gutter, and Swale (m)	113	102	90%
Storm Line (m)	40	40	100%

Drainage Operations

In Progress



Culvert Replacements and
Channel Maintenance
Rge Rd 274 North of Twp Rd 564



Back of Lot Easements
Improvement
42-46 Discovery Ave, Cardiff
G&J

Drainage Operations

In Progress



Drainage Improvement
Rge Rd 244 South of Twp 564



Culvert Coring
Twp Rd 554 West of Cardiff

Drainage Operations

In Progress



Culvert Replacement
Rge Rd 273 North of Twp Rd 540



Culvert Replacement
Rge Rd 224 North of Hwy 28

Bridge Maintenance Contract

In Progress: 0% Complete
Schedule: Anticipated September to December 2025
Contractor: Volker Stevin Highways Ltd.

Bridge #	Location:	Council Division	Status:	Repair Work:
BF 00510	Twp Rd 554 west of Rge Rd 245	2	Incomplete	▪ Bridgerail Repairs – Weld holes in 2 bridgerail posts, Seal Curbs, Seal ACP Crack (50 m), Pile Repairs – Post / replace 3 piles
BF 00878	Rge Rd 240 north of Twp Rd 554	5	Incomplete	▪ Partial Depth Repairs – Spall at Span 1 Girder 11, delamination at Span 1
BF 01552	Rge Rd 270 north of Hwy 642	4	Incomplete	▪ Straighten Girders, Bridgerail Repairs, Concrete Partial Depth Repairs, Wingwall Repairs, Pile Repairs, Miscellaneous Repairs – Clean deck, remove drift
BF 01596	Twp Rd 570 east of Rge Rd 275	4	Incomplete	▪ Full Depth Concrete Repairs on Girder, Straighten Girders, Guardrail Repairs, Miscellaneous Repairs – Remove gravel windrows under guardrails
BF 07503	Rge Rd 212 north of Twp Rd 572	6	Incomplete	▪ Headslope Repairs, Heavy Rock Riprap (Class 1) at Abutment, Miscellaneous Repairs – Remove beaver dam
BF 70598	Rge Rd 241 north of Twp Rd 554	5	Incomplete	▪ Heavy Rock Riprap (Class 2) – Install at outlet
BF 74054	Lamoureux Dr east of Old Fort Tr	1	Incomplete	▪ Heavy Rock Riprap (Class 1) – Install at outlet

Questions?



Sturgeon
C O U N T Y