

Recommendations and endorsements

Feb Meeting:

- Recommend a program where farmers can sign up to windrow their fields to help keep the snow/moisture on their land and prevent it from drifting onto the roads.
- Endorse the snow fence initiative which aims to reduce drifting across roads.
- Recommend a public facing dashboard that show residents snow clearing and grading activities/progress (example during snow event)
- Recommend considering using contract services to clear snow at strategic locations (parking lots, waterfill lots etc) to keep staff available for road clearing. This could help rebalance existing staff availability to clear additions to the paved network.
- Endorse indoor heated equipment storage where possible, to ensure equipment can function in very cold weather.

Recommendations and endorsements

May Meeting:

- Endorse continued public notification process around Open Houses in spring.
- Endorse recent improvements around dust suppression product placement (mineral oil with millings).
- Endorse the new capital project delivery model that was rolled out in 2024, and which yielded results in 2025.
- Recommend including shortlisting criteria in procurement tenders for projects, so that contractors know if they haven't made the shortlist and are released from their bid bond obligation.

Recommendations and endorsements

July Meeting:

- Recommend review of mowing service level, and cleaning frequency of mowing equipment to mitigate re-distribution/ broadcast of weed seeds.

Recommendations and endorsements

October Meeting:

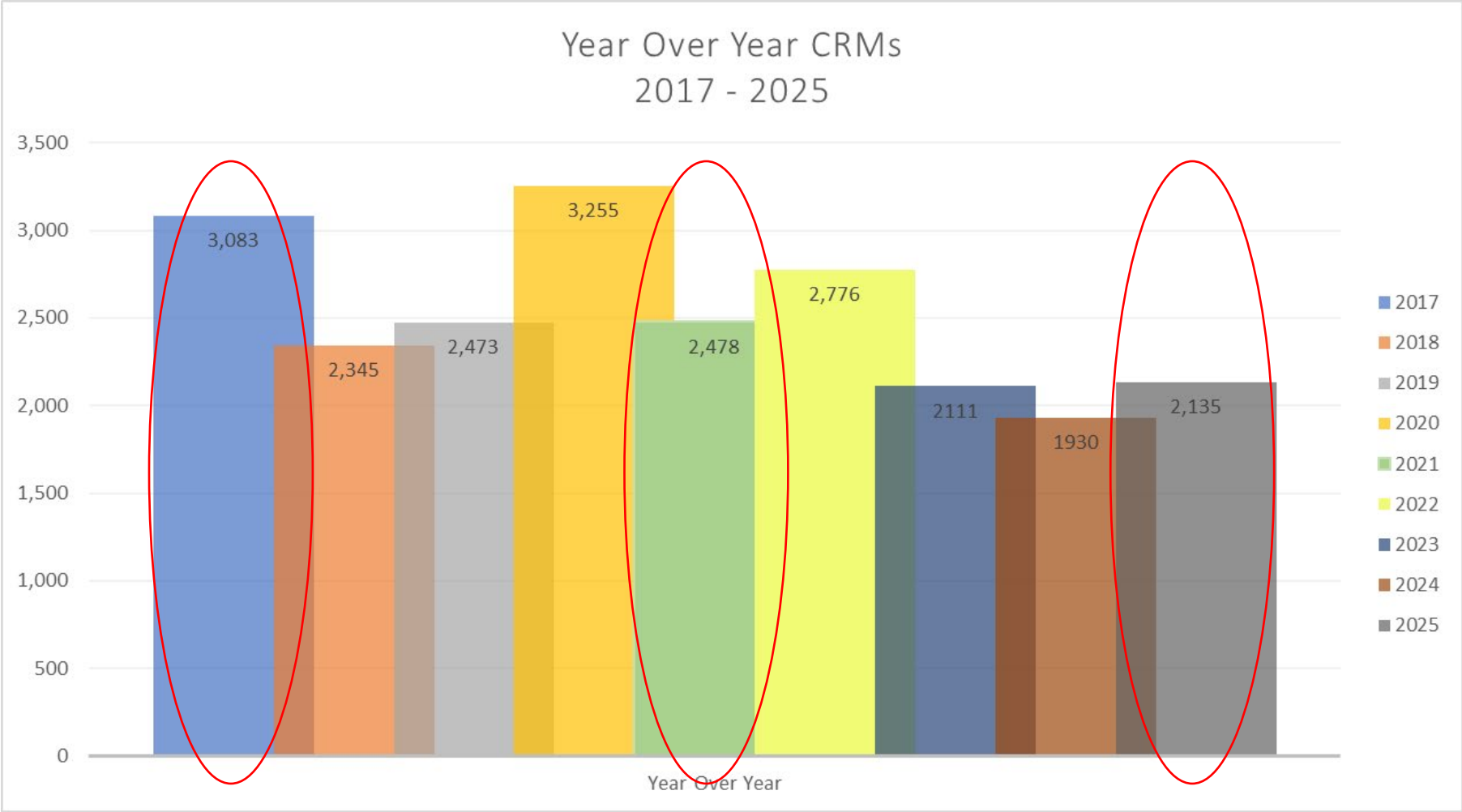
- Where approaches to railway crossings are paved, and are near a dust suppression site (within approximately 50-100meters), TAC recommends applying dust suppression to bridge the paved rail approach and the dust suppression segment to reduce maintenance challenges, improve road performance, and enhance safety and user experience.

CRM Year over year



Sturgeon
C O U N T Y

Year over year



Year over year

Year over Year Comparison

2025 CRM DATA October 31, 2025

CRM	JAN	FEB	MAR	APR	MAY	JUN	JUL	AUG	SEP	OCT	YTD
TOTAL # of New Cases	197	156	157	177	282	228	306	203	245	184	2,135
TOTAL # of Cases Resolved	197	155	155	168	267	218	294	198	225	152	2,029
% of Cases Resolved	100%	99%	99%	95%	95%	96%	96%	98%	92%	83%	95%

2024 CRM DATA October 31, 2024

CRM	JAN	FEB	MAR	APR	MAY	JUN	JUL	AUG	SEP	OCT	YTD
TOTAL # of New Cases	141	96	110	245	255	257	244	177	206	199	1,930
TOTAL # of Cases Resolved	140	92	106	235	250	253	238	171	201	172	1,858
% of Cases Resolved	99%	96%	96%	96%	98%	98%	98%	97%	98%	86%	96%

*****>

2025 Capital Updates



Sturgeon
C O U N T Y

Capital Program Status - Summary

Project Name / Location	Project Status	Written Update	Contractor	Consultant
Twp Rd 554 – 3.2kms W of Hwy 2	Complete	Project is complete	E-Construction	N/A
Rge Rd 232 – Hwy 37 to Pilon Creek	Complete	Project is complete	Knelsen Sand and Gravel	Tetra Tech
Rge Rd 231 – Gibbonslea to Lost Point Lake	Complete	Project is complete	Knelsen Sand and Gravel	N/A
Boysdale Rd / Rge Rd 223	Complete	Project is complete	Knelsen Sand and Gravel	MPE
Sturgeon Valley Estates / Rge Rd 230	Complete	Project is complete	Knelsen Sand and Gravel	McElhanney
Lamoureux Dr – Hwy 15 to Rge Rd 224A	Complete	Project is complete	TBL Construction	WSP
Vista Rd / Rge Rd 230	Winter shutdown	1st lift of paving on Rge Rd 230 Complete	TBL Construction	ROHI
Rge Rd 232 – Twp Rd 572 to 573	Complete	Project is complete	Prairie North	WSP
Rge Rd 220 – Twp Rd 580 to Redwater	Complete	Project is complete	TBD	N/A
SIP Drainage – Phase 3	Complete	Project is complete	TBL Construction	McElhanney
Villeneuve Drainage Phase 4A	On-Track	In Progress and nearing completion	Delta Valley	MPA Engineering

Capital Program Status - Summary

Project Name / Location	Project Status	Written Update	Contractor	Consultant
Hillsborough Drainage	On-Track	Construction underway	Pidherney's	McElhanney
Starkey Pedestrian Bridge and Pathway	On-Track	Construction underway	Multiple	MPE
BF73344 – Rge Rd 252 N of Twp Rd 580	Complete	Project is complete	Abacus Enterprises	ABMK Engineering
BF73756 – Rge Rd 235 N of Twp Rd 570	Complete	Project is complete	Formula Alberta	WSP
BF00774 – Twp Rd 552 W of Rge Rd 242	Complete	Project is complete	TerraPro	MPA Engineering
BF02404 – Rge Rd 262 N of Hwy 37	Caution	Project deferred to 2026 due to legacy land title issue	TerraPro	MPA Engineering
Casa Vista Pedestrian Bridge	On-Track	Construction underway	Formula Alberta	MPA Engineering

Twp Rd 554 – 3.2kms W of Hwy 2

Project Status: Complete

Written Update:

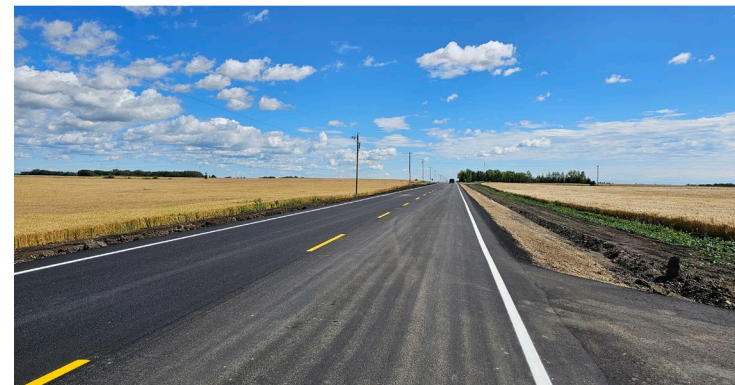
Primary project scope is completed.

Program: Collector Reconstruction

Project Manager: Khalil Shaikh

Contractor: E-Construction

Consultant: N/A



Rge Rd 232 – Hwy 37 to Pilon Creek

Project Status: Complete

Written Update:

Primary project scope is completed.

Program: Collector Reconstruction

Project Manager: Ty Fergel

Contractor: Knelsen Sand and Gravel

Consultant: Tetra Tech



Rge Rd 231 – Gibbonslea to Lost Point Lake

Project Status: Complete

Written Update:

Primary project scope is completed.

Program: Collector Reconstruction

Project Manager: Khalil Shaikh

Contractor: Knelsen Sand and Gravel

Consultant: N/A



Boysdale Rd / Rge Rd 223

Project Status: Complete

Written Update:

Primary project scope is completed.

Program: Collector Reconstruction / Rehabilitation

Project Manager: Adnan Kamal

Contractor: Knelsen Sand and Gravel

Consultant: MPE



Sturgeon Valley Estates / Rge Rd 230

Project Status: Complete

Written Update:

Primary project scope is completed.

Program: Rehabilitation /
Pavement Preservation

Project Manager: Scot Williams

Contractor: Knelsen Sand and
Gravel

Consultant: McElhanney



Lamoureux Dr – Hwy 15 to Rge Rd 224A

Project Status: Complete

Written Update:

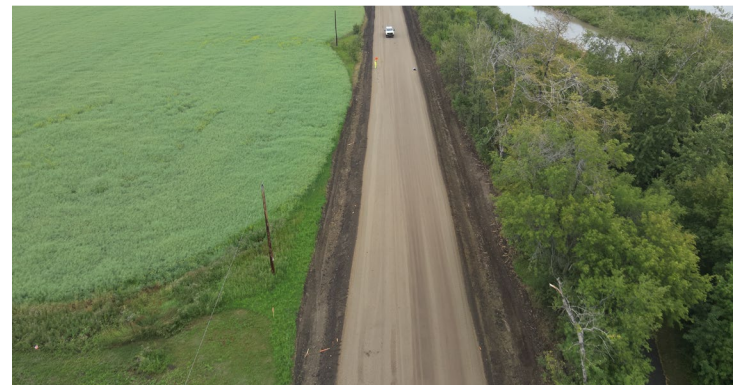
Primary project scope is completed.

Program: Rehabilitation

Project Manager: David Becker

Contractor: TBL Construction

Consultant: WSP



Vista Rd / Rge Rd 230

Project Status: Winter Shutdown

Written Update:

First lift paving completed on Rge Rd 230

Program: Rehabilitation

Project Manager: Paul Theoret

Contractor: TBL Construction

Consultant: ROHI



Rge Rd 232 – Twp Rd 572 to 573

Project Status: Complete

Written Update:

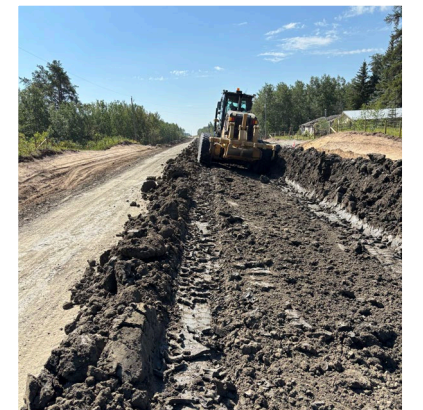
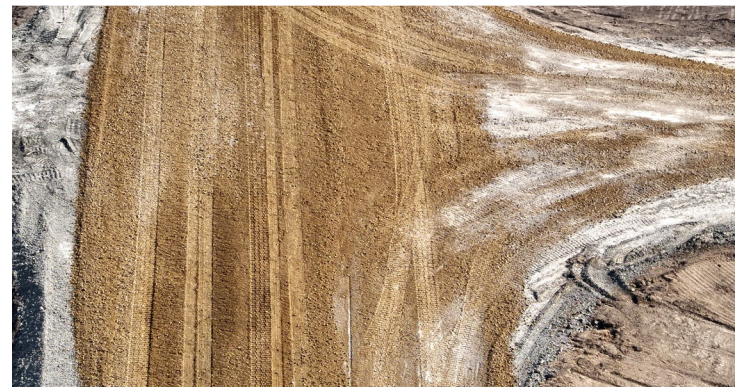
Primary project scope is completed.

Program: Local Roads

Project Manager: Paul Theoret

Contractor: Prairie North

Consultant: WSP



Rge Rd 220 – Twp Rd 580 to Redwater

Project Status: Complete

Written Update:

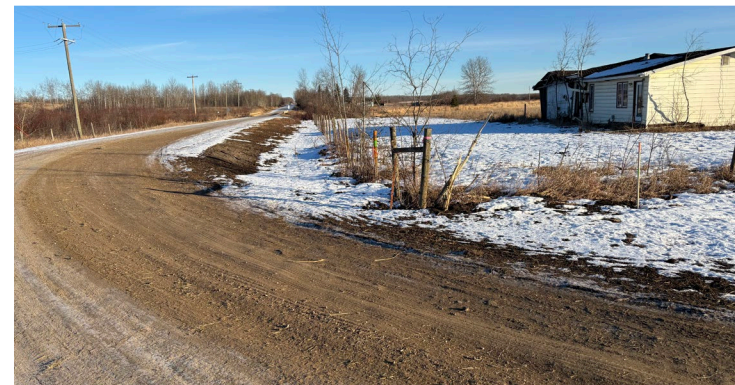
Primary project scope is completed.

Program: Local Roads

Project Manager: Paul Theoret

Contractor: Doblanko

Consultant: N/A



SIP Drainage – Phase 3

Project Status: Complete

Written Update:

Primary project scope is completed.

Program: Drainage

Project Manager: David Becker

Contractor: TBL Construction

Consultant: McElhanney



Villeneuve Drainage – Phase 4A

Project Status: Complete

Written Update:

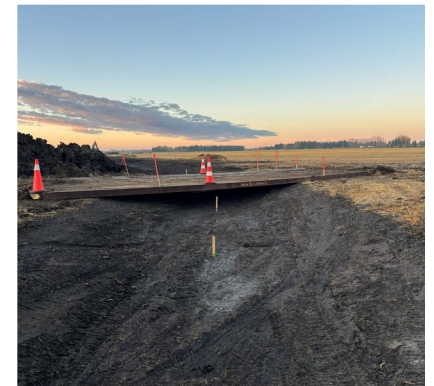
Primary project scope is completed.

Program: Drainage

Project Manager: Scot Williams

Contractor: Delta Valley

Consultant: MPA Engineering



Hillsborough Drainage

Project Status: On-Track

Written Update:

Initial brushing work completed

Program: Drainage

Project Manager: Scot Williams

Contractor: Pidherney's

Consultant: McElhanney



Starkey Pedestrian Bridge and Pathway

Project Status: On-track

Written Update:

Construction underway, Phase 1 set to open to pedestrians this winter

Program: Open Spaces

Project Manager: Stephen Hinton / Karolina Drabik

Contractor: Multiple

Consultant: MPE



BF73344 – Rge Rd 252 N of Twp Rd 580

Project Status: Complete

Written Update:

Primary project scope is completed.

Program: Bridges

Project Manager: Mark Guerette

Contractor: Abacus Enterprises

Consultant: ABMK Engineering



BF73756 – Rge Rd 235 N of Twp Rd 570

Project Status: Complete

Written Update:

Primary project scope is completed.

Program: Bridges

Project Manager: Mark Guerette

Contractor: Formula Alberta

Consultant: WSP



BF00774 – Twp Rd 552 W of Rge Rd 242

Project Status: Complete

Written Update:

Primary project scope is completed.

Program: Bridges

Project Manager: Mark Guerette

Contractor: TerraPro

Consultant: MPA Engineering



BF02404 – Rge Rd 262 N of Hwy 37

Project Status: Caution

Written Update:

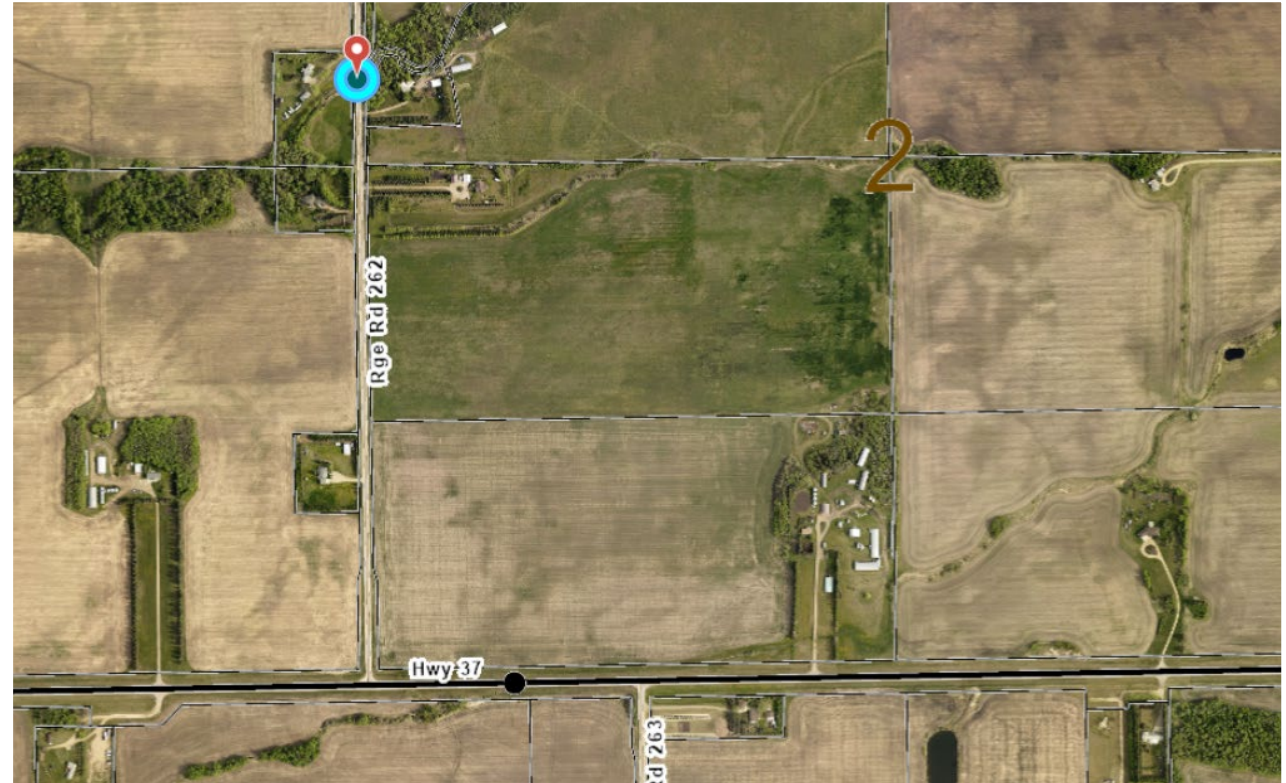
Project deferred to 2026 due to legacy land matter

Program: Bridges

Project Manager: David Becker

Contractor: TerraPro

Consultant: MPA Engineering



Casa Vista Pedestrian Bridge

Project Status: On-track

Written Update:

Formula has commenced initial bridge foundation works

Program: Bridges / Open Spaces

Project Manager: Mark Guerette

Contractor: Formula Alberta

Consultant: MPA Engineering

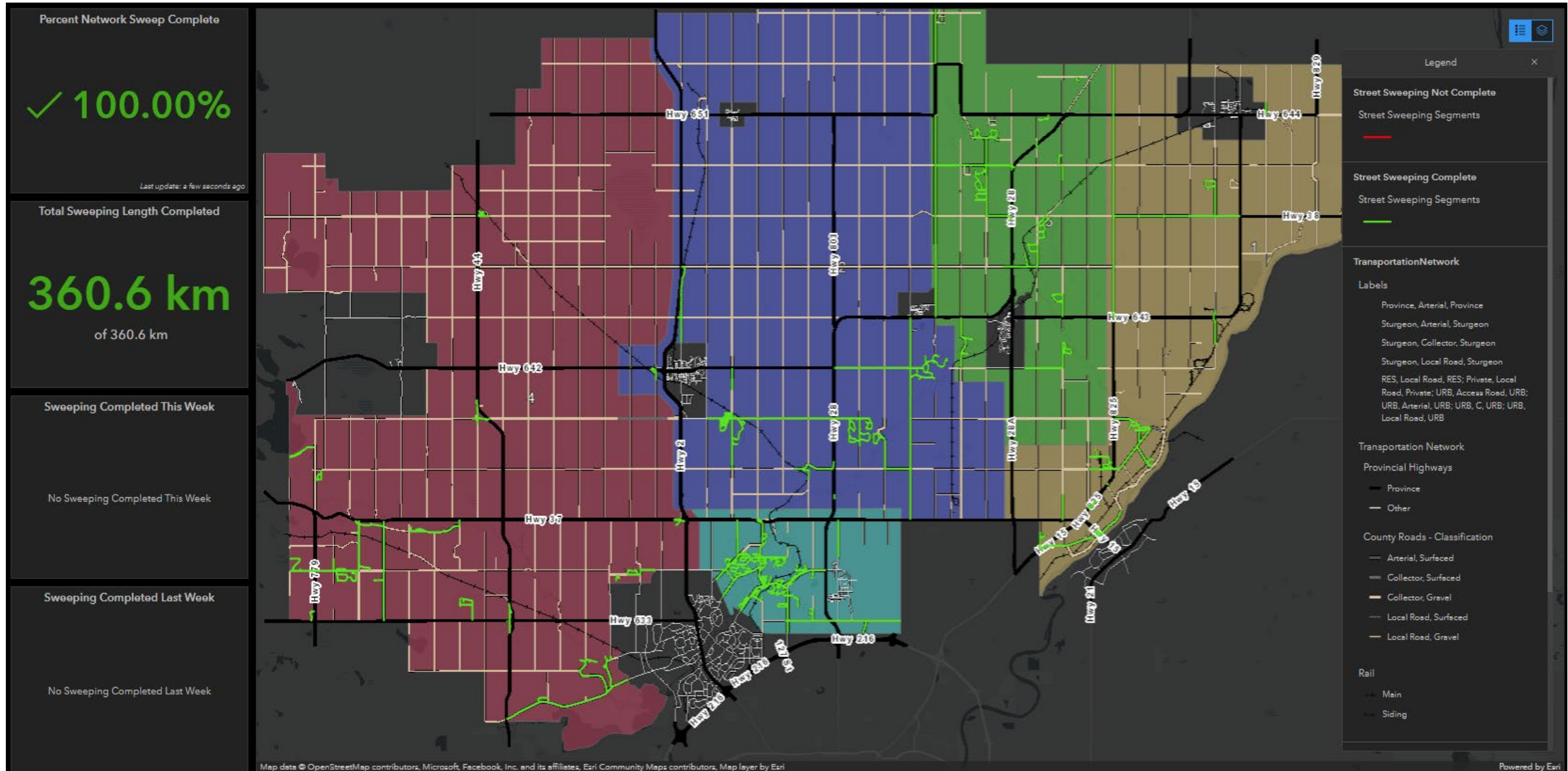


2025 Operations Updates



Sturgeon
C O U N T Y

Street Sweeping Completed





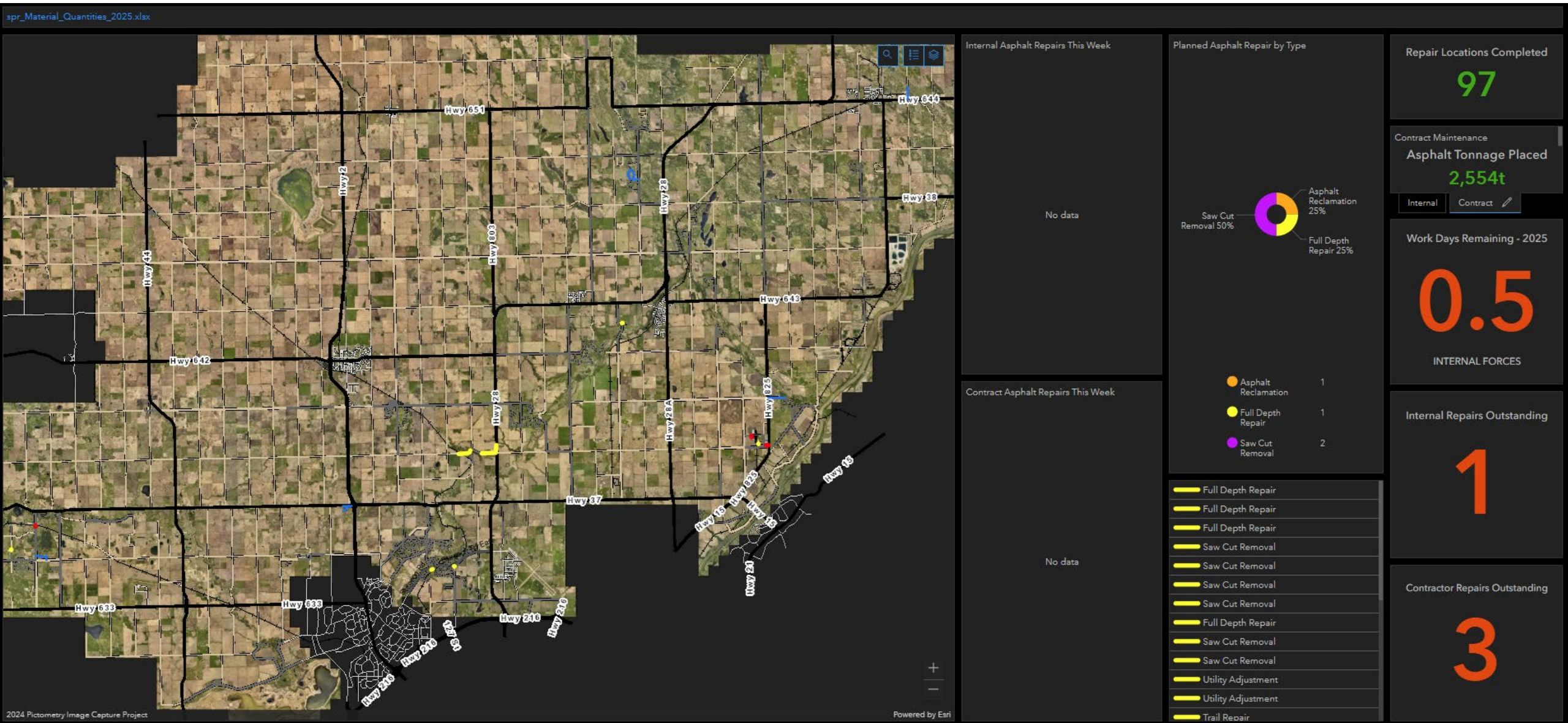
Line Painting Completed

2025 Completed Quantities	
Centerline & Shoulders	186.24 km
Centerline Only	5.2 km
Additional Lane Lines	16.05 km
Gore Lines	0.357 km
Painted Stop Bars	33
Painted Arrows	52
Rail Crossings	12

GIS Pavement Marking Asset Database currently being developed.

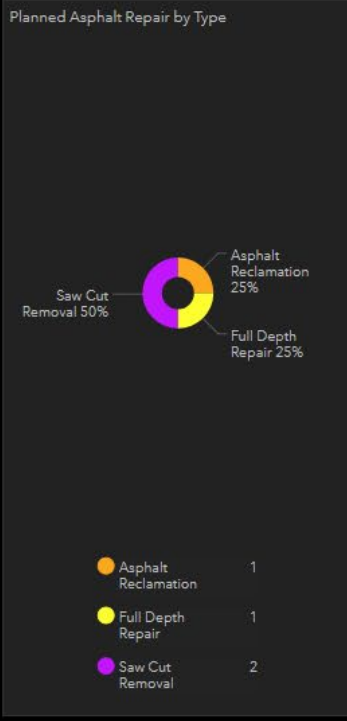


Asphalt Maintenance



Internal Asphalt Repairs This Week

No data



Repair Locations Completed

97

Contract Maintenance

Asphalt Tonnage Placed

2,554t

Internal Contract

Work Days Remaining - 2025

0.5

INTERNAL FORCES

Contract Asphalt Repairs This Week

No data

- Asphalt Reclamation 1
- Full Depth Repair 1
- Saw Cut Removal 2

Internal Repairs Outstanding

1

- Full Depth Repair
- Full Depth Repair
- Full Depth Repair
- Saw Cut Removal
- Saw Cut Removal
- Saw Cut Removal
- Saw Cut Removal
- Full Depth Repair
- Saw Cut Removal
- Saw Cut Removal
- Utility Adjustment
- Utility Adjustment
- Trail Repair

Contractor Repairs Outstanding

3



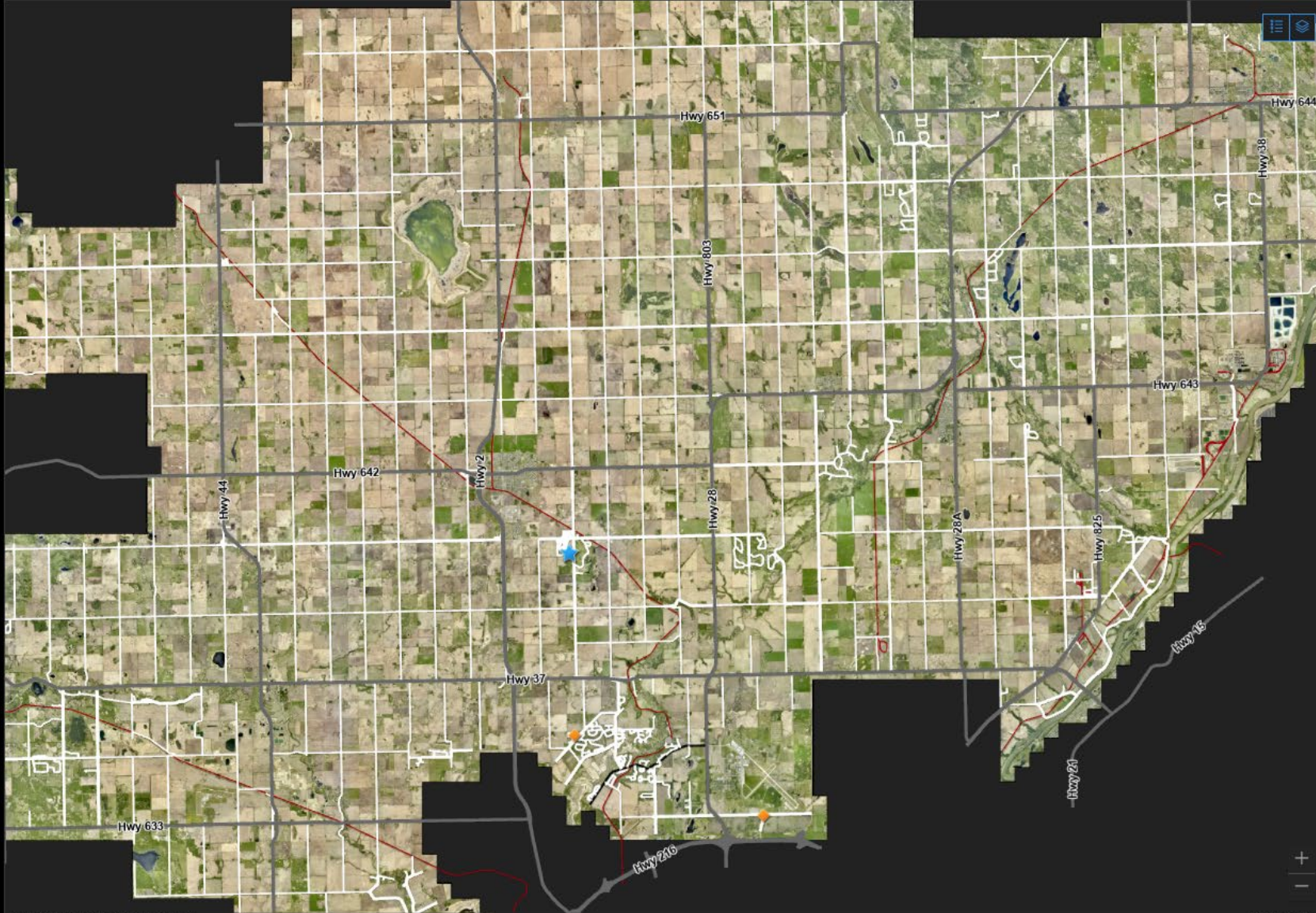


Pothole Patching

Pothole Repair - Current Year

Potholes From Last Month or Older

2



2024 Pictometry Image Capture Project

Powered by Esri

New Potholes



Potholes Repaired This Week

No Repairs This Week

Potholes Repaired This Year



Potholes Repaired Last Year



Last update: 19 minutes ago



Garbage

New Garbage Sites

5

New Sites - Last 14 Days

- 2025-11-20, 12:34 p.m. Deer skin/carcass
- 2025-11-21, 12:03 p.m. O

Last update: a few seconds ago

Sites over 14 Days Old

No data

Sites Completed Last 7 Days

3

Sites Completed This Year

331

Sites Completed Last Year

306





Signs

Current Year Sign Maintenance Status



Sign Posts in Service

7,848

Regulatory Signs in Service

2,563

Warning Signs in Service

4,014

Information Signs in Service

3,116

Signs Leaning



Brush Limbing Required



Sign Replacements Required



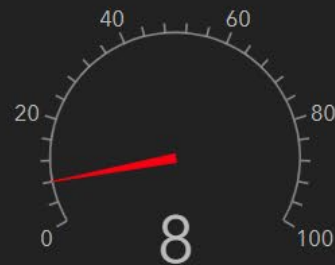
Signs Installed This Year

951

Signs Damaged



Signs Waiting for Locates



Signs Ready for Install



Capital Project ID Signs

23

In Service

Annual Sign Inspections Completed This Year

737 or 7.836%%

of 9,405 sign facilities

Gauge

List





Brushing

Brushing Completed This Year

35,456

meters

Last update: a few seconds ago

Work Completed Last 7 Days

Sightline Brushing

Clear trees that are along roadside of fenceline. Trees causing sightline issue for farmer when exiting field

Sightline Brushing

Parcel owner requested removal of trees to improve sightline visibility for tractors/trucks when they are exiting their field. Remove any trees causing sightline visibility when leaving the field approach. Skidsteer with grapple and mulcher

Sightline Brushing

Sightline concern, remove brush within sightline triangle (20m north, 30m east). ROE required before completing any work

Roadside Brushing

Use signs on blind corner. Chainsaw and chipper required to cleanup overgrown trees. Cut and chip into back of single axle

Sightline Brushing

Desktop addition - please confirm details onsite.

Safety and High Risk

4

Sites Completed

Last update: a few seconds ago

Roadside

474

Sites Completed

Last update: a few seconds ago

Major Projects

16

Sites Completed

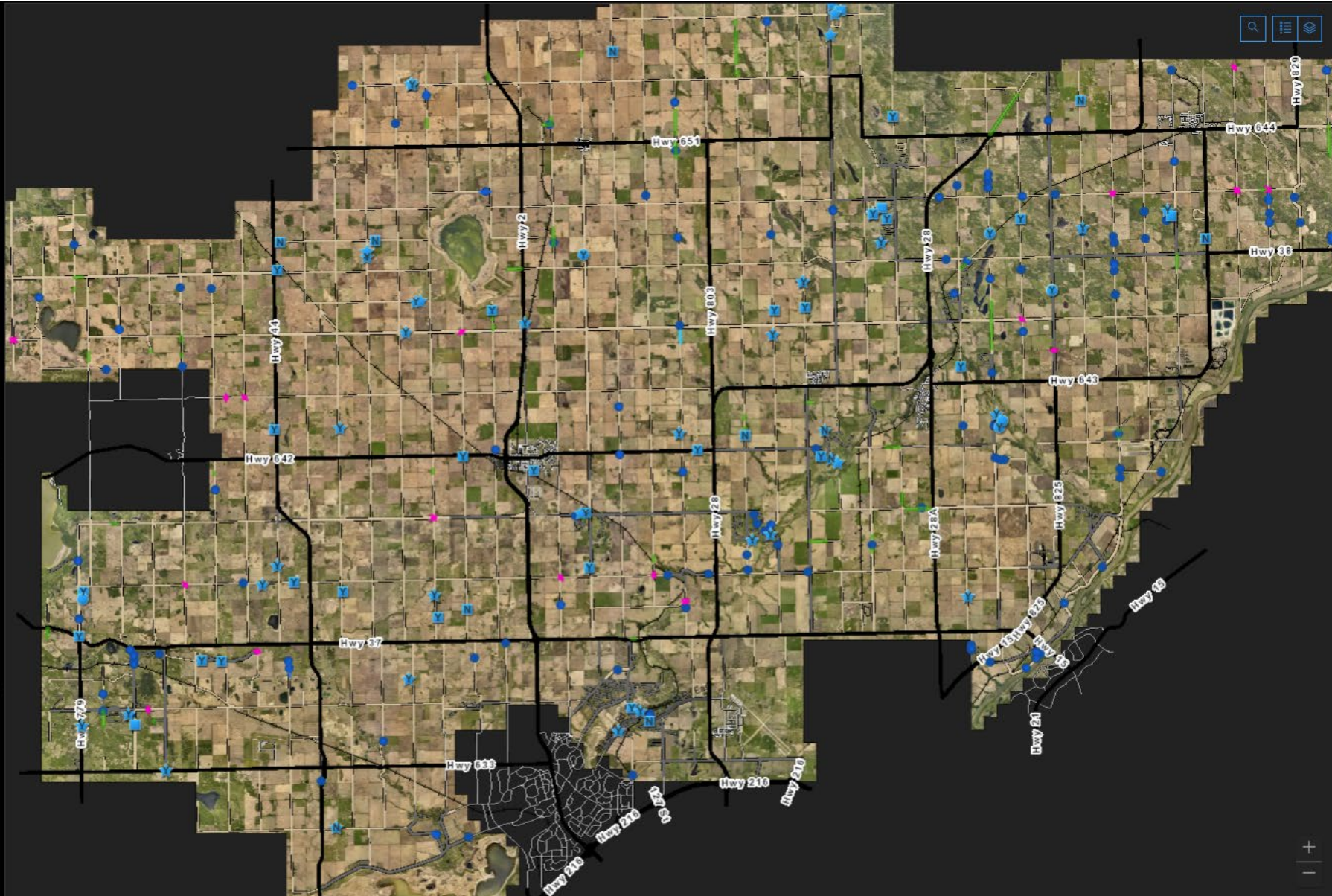
Last update: a few seconds ago

Sightlines

54

Sites Completed

Last update: a few seconds ago

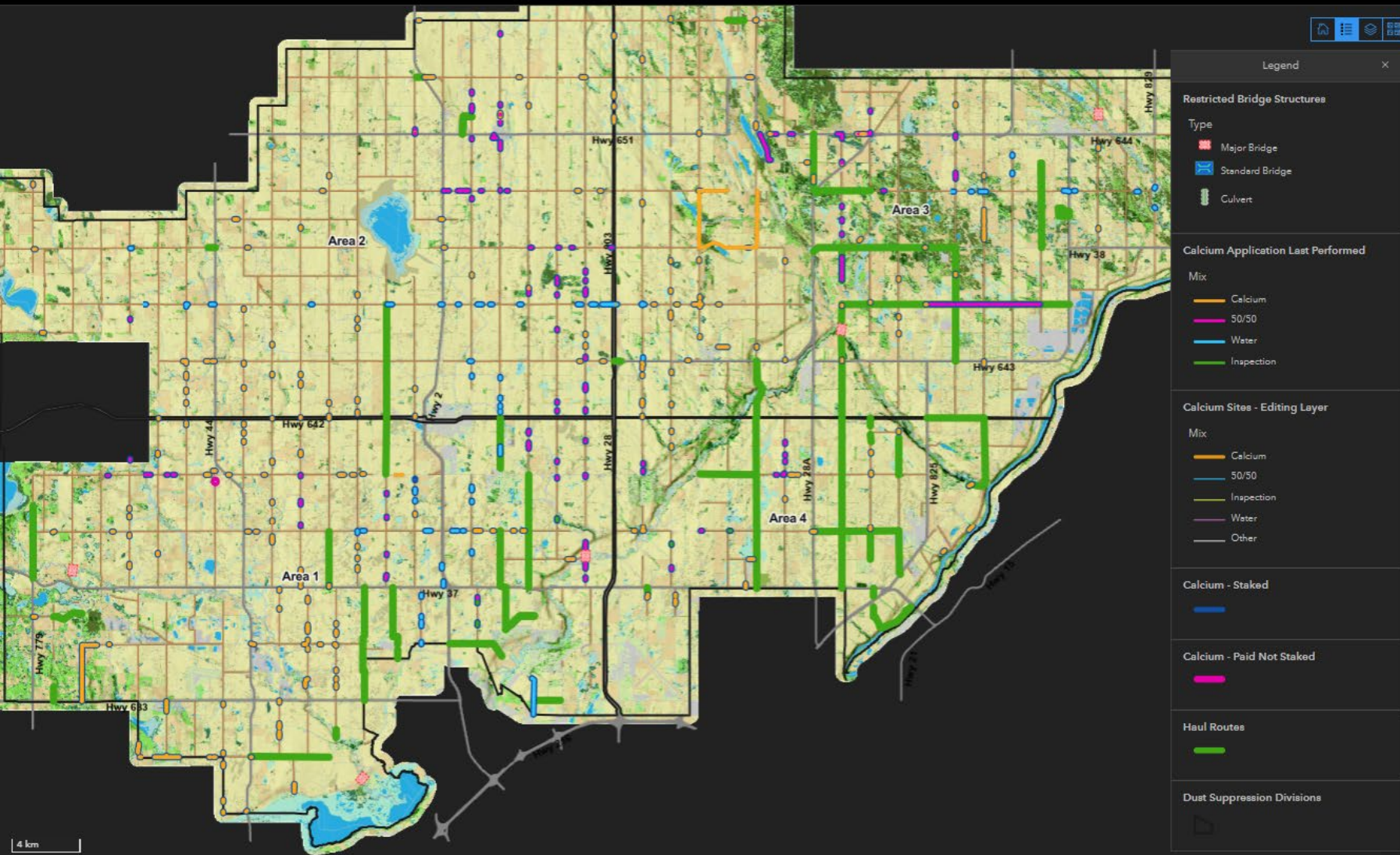




Dust Suppression - Calcium

Maintenance

Post Application Calcium Maintenance



Full Calcium Applications

12

Total Calcium Sites

513

50/50 Calcium Applications

774

Water Calcium Applications

599

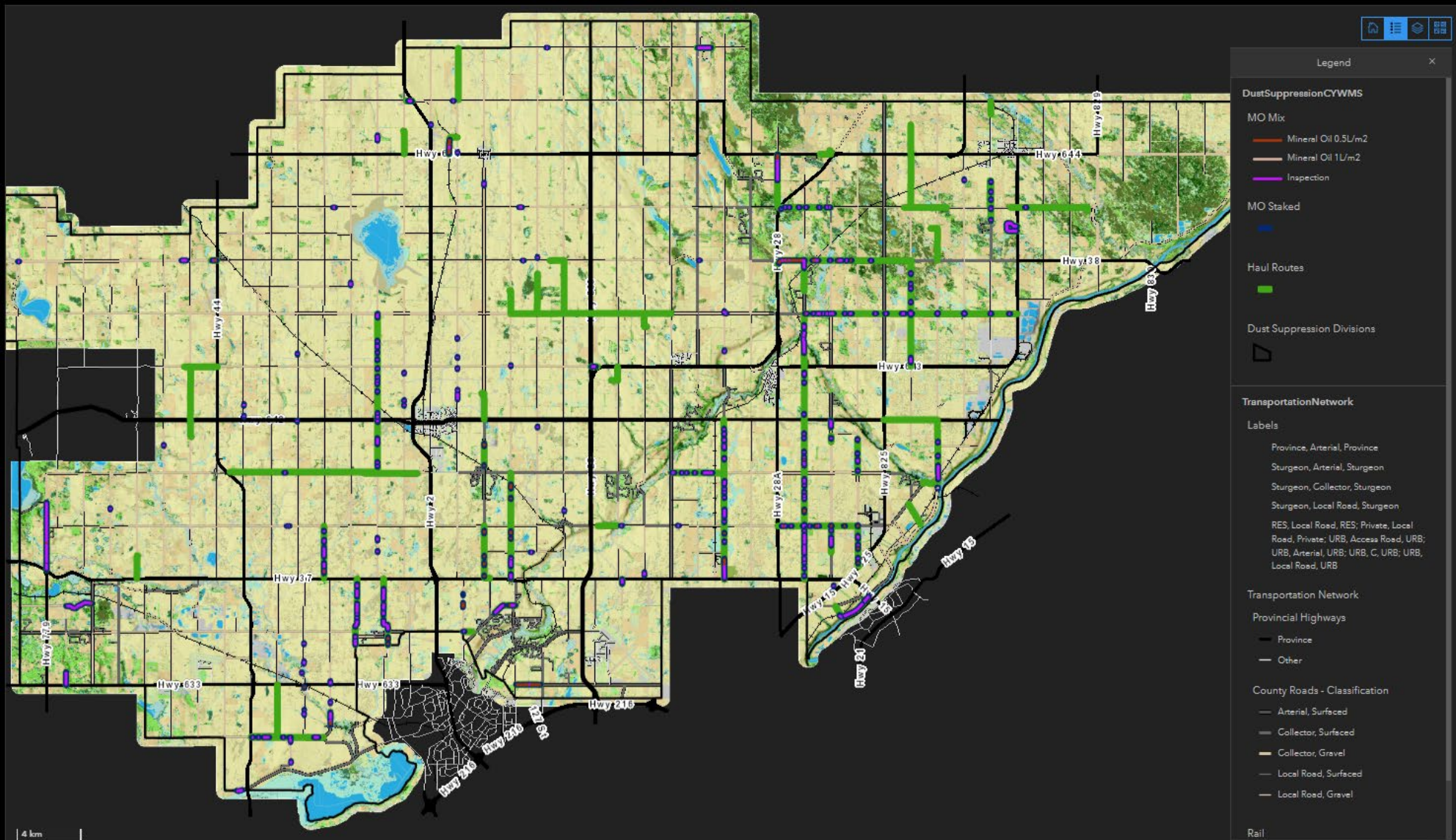
Total Calcium Sites Active Length

67.92 km



Dust Suppression – Mineral Oil

Maintenance



Mineral Oil Site Inspections	Total Mineral Oil Sites
1,746	488
Full Mineral Oil Applications	Total Active Mineral Oil Length
7	61.85 km
Maintenance Mineral Oil Applications	
665	



Road Graveling

In Progress



Applied (Rounded)

406km

Last update: 10 minutes ago

Planned (Rounded)

405km

Last update: 10 minutes ago

% Planned Completed YTD



Last update: 10 minutes ago

Gravel Spots

146 Spots

Gravel Road Improvement Projects

BUNDLE A- SHOULDER PULLING AND STABILIZATION

BUNDLE 'A'

SITE #	LOCATION	STATUS	% COMPLETE
1-A	TWP 570- RR 272 - RR273	COMPLETE	100%
2-A	TWP 570- RR 273 - RR274	COMPLETE	100%
3-A	RR 241- HWY 28 - TWP RD 564	COMPLETE	100%
4-A	RGE RD 261 TWP RD 554- HWY 642	COMPLETE	100%
5-A	RR 260- TWP 552 - TWP 554	COMPLETE	100%
6-A	KURYLUK BLVD- TURNAROUND BULB	COMPLETE	100%
7-A	RGE RD 263- HWY 37 - TWP RD 552	COMPLETE	100%



Gravel Road Improvement Projects

BUNDLE B- FROST BOIL REPAIRS

BUNDLE 'B'

SITE #	LOCATION	STATUS	% COMPLETE
1-B	55220 RR 231	COMPLETE	100%
2-B	55225 RGE RD 231	COMPLETE	100%
3-B	56307 RR 231	COMPLETE	100%
4-B	56208 RGE RD 231	COMPLETE	100%
5-B	22410 TWP RD 564	COMPLETE	100%
6-B	22507 TWP RD 564	COMPLETE	100%
7-B	23505 TWP RD 572	COMPLETE	100%
8-B	23512 TWP RD 572	COMPLETE	100%
9-B	54508 RGE RD 255	COMPLETE	100%
10-B	54520 RGE RD 255	COMPLETE	100%
11-B	57012 RGE RD 234	COMPLETE	100%
12-B	56119 RGE RD 251	COMPLETE	100%



Drainage Operations

98% Complete



Culvert Replacements and
Channel Maintenance
Rge Rd 274 North of Twp Rd 564



Back of Lot Easements
Improvement
42-46 Discovery Ave, Cardiff
G&J

Drainage Operations

100% Complete



Drainage Improvement
Rge Rd 244 South of Twp 564



Culvert Coring
Twp Rd 554 West of Cardiff

Drainage Operations

100% Complete



Culvert Replacement
Rge Rd 273 North of Twp Rd 540



Culvert Replacement
Rge Rd 224 North of Hwy 28

Bridge Maintenance Contract

Project:	Location:	Anticipated Schedule:	Duration:	Scope:	Status:	Traffic Impact:
BF 00593	Rge Rd 244 north of Twp Rd 551	Nov 25, 2025	1 Day	<ul style="list-style-type: none"> •Backwall Repairs 	Complete	Single Lane Closure
BF 01552	Rge Rd 270 south of Twp Rd 562	Nov 26- Dec 4, 2025	7 Days	<ul style="list-style-type: none"> •Reset Girders 	In Progress	Single Lane Closure
BF 01596	Twp Rd 570 east of Rge Rd 275	Dec 5-15, 2025	7 Days	<ul style="list-style-type: none"> •Reset Girders •Full Depth Repairs •Partial Depth Repairs •Miscellaneous Repairs 	In Progress	Single Lane Closure
BF 00510	Twp Rd 554 west of Rge Rd 245	Oct 27-31, 2025 Road Closure Dec 1-5	5 Days	<ul style="list-style-type: none"> •Cleaning Sealing deck •Concrete Crack Repairs •ACP Repairs •Pile Repairs (extra work requires road closure) •Bridgerail Repairs •Backwall Repairs •Extra Work 	In Progress	New – FULL ROAD CLOSURE Dec 1-5
BF 00878	Rge Rd 240 north of Twp Rd 554	Nov 3- Nov 12, 2025 Remaining repairs Dec 8-12	8 days	<ul style="list-style-type: none"> •Bridge Washing •Partial Depth Repairs •Concrete Crack Repairs •Bridgerail Repairs •Guardrail Repairs •Miscellaneous Repairs 	In Progress	Single Lane Closure
BF 07503	Rge Rd 212 north of Twp Rd 572	Nov 13-Dec 20, 2025	6 Days	<ul style="list-style-type: none"> •Headslope Repairs •Heavy Rock Riprap (Class 1) •Miscellaneous Repairs 	Complete	Single Lane Closure
BF 72528	Rge Rd 212 north of Hwy 38	Nov 21, 2025	1 Day	<ul style="list-style-type: none"> •Heavy Rock Riprap (Class 2) 	Complete	Single Lane Closure -
BF 74054	Lamoureux Dr west of Old ft Trail	Nov 24, 2025	1 Day	<ul style="list-style-type: none"> •Heavy Rock Riprap (Class 1) 	Complete	Single Lane Closure

Questions?



Sturgeon
C O U N T Y

Policy, Guidelines, and Procedures

Council Policy – Snow & Ice Control

Approved December 13, 2016

- Establishes winter service levels both during and outside of Recognized Snow Events for all open, public roadways the County is responsible for.

Winter Road Maintenance Guidelines & Procedures

Reviewed Annually

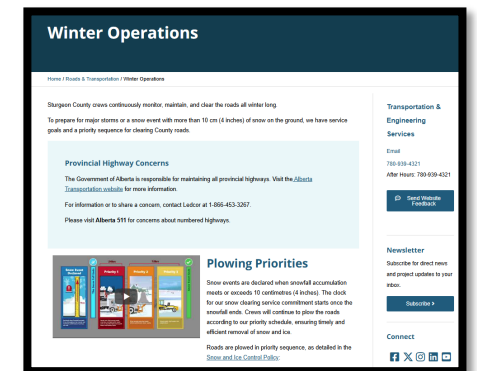
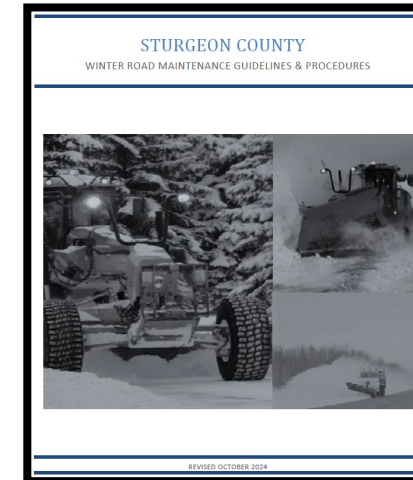
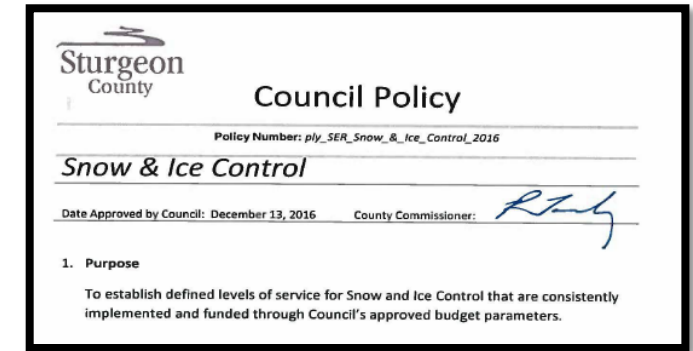
- 27 pg. document that contains various information on required resources, materials, operating parameters, communications, obstructions, maintenance reduction strategies, and maintenance approaches for various road types.
- Applies to both Paved and Gravel roads operations.

Gravel Roads Maintenance – Training Manual

Comprehensive manual that also speaks to the gravel road component of Winter Maintenance.

Sturgeon County Website – Winter Operations

- <https://www.sturgeoncounty.ca/roads-transportation/winter/>
- Provides information on Plowing Priorities, Service Goals, and other information.



Network Size & Available Resources

Paved Roads – 365.9 km

5 Plow Areas

Full Time Operators	15
• 10 Dayshift – 6am to 230pm	
• 5 Afternoon Shift – 230pm to 11pm	
Mainline Plows (tandem & larger)	8
Single Axle Plows	2
Graders	3
Loaders	4
Loader/Snow Blower	1
Skidsteers	3



Gravel Roads – 1,401.8 km

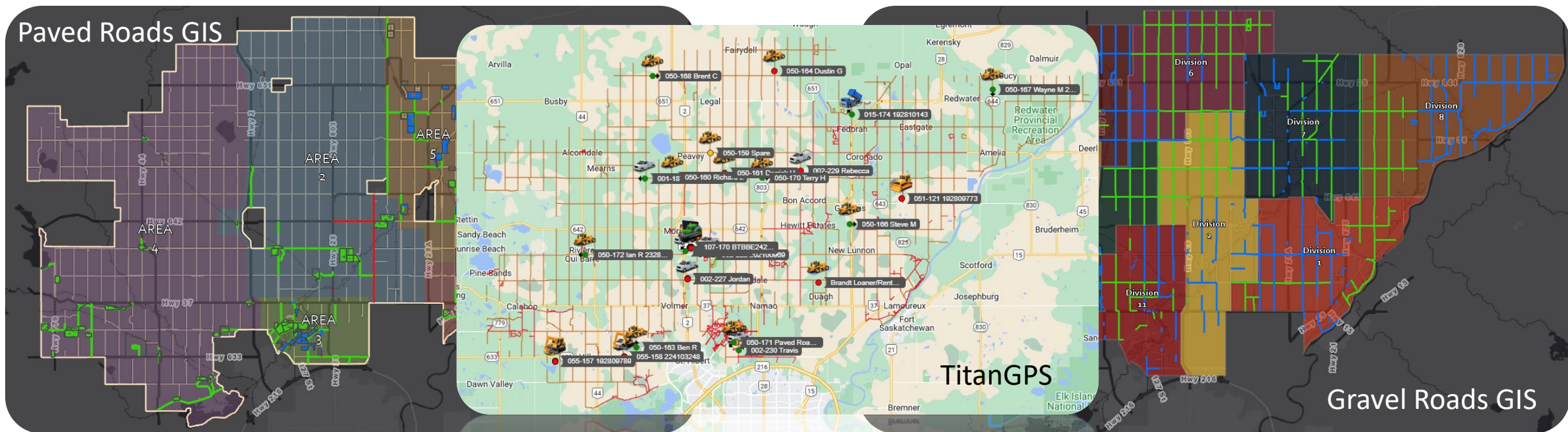
11 Grader Divisions

Full Time Operators	11
• Dayshift 7am to 330pm	
Graders	13



Operations Tracking & Monitoring

- Automated Vehicle Location (AVL) services provided by TitanGPS.
- Interactive maintenance updates via Geographic Information System (GIS). Primarily used during a Snow Event response, operators through iPad input, update progress in near real time.
- Currently working to integrate both the TitanGPS and GIS systems for easier maintenance analysis and a public facing component.



Paved Roads Division - Overview

Operations Supervisor – Brent Derksen : Field Supervisors – Clint Finkbeiner, Rebecca Baumgartner

PRIMARY TASK – Paved Network Snow and Ice Control

- The Paved Road network is operationally divided into two categories: **Mains** (24hr LOS) and **Subdivisions** (72hr LOS)
 - The aim for **Mains** is to achieve, at minimum, bare wheel paths and minimal center and shoulder snowpack.
 - This is accomplished by mechanical removal (plowing) first, then by the application of sand/salt mix with subsequent plowing/sanding/salting cycles until good winter driving conditions are achieved.
 - The aim for **Subdivisions** are to clear loose snow throughout and place sand/salt mix only on curves, hills and intersections to maintain traction. An exception is made for freezing rain conditions and in Cardiff – Echoes where snow is removed by snow blower with every 30 to 40cm of accumulation to prevent spring flooding.
 - After initial plow cleanup on the network is complete, graders are deployed to scrape/wing as required.

SECONDARY TASKS

- Parking lot snow clearing – includes County Center, Protective Services, and other locations not serviceable by area plow trucks
- UWMS compound snow clearing at various locations
- Sign maintenance
- Garbage/Carcass cleanup
- Contract and internal brushing activities
- Assist Gravel Roads with pickled gravel application
- Equipment washing and maintenance
- Snow dump pile maintenance
- Pothole maintenance
- Roundabout & Bridge Shoulder Snow Removal
- County Center Snow Pile Removal

Paved Roads Division – Equipment/Material Detail

TRUCKS AND EQUIPMENT

MAINLINE PLOW TRUCKS

- Equipped with 12' front plow and right-side wing
- 7 of 8 equipped with prewet capability
- 7 tandem drive & 1 tridem drive units

GRADERS

- 3 different sizes for various scenarios
- 3 of 3 wing equipped
- 1 of 3 snow gate equipped

SNOWBLOWER

- RPMTech 220



MATERIALS

- **Sand** - stockpile and pickle **5500t** per season
- **Salt** – store up to 250t in storage shelter, ordering additional as required. Up to **2000t** per season
- **Washed Rock Chip** – used for parking lot maintenance. Up to **250t** per season

Pickling Sand

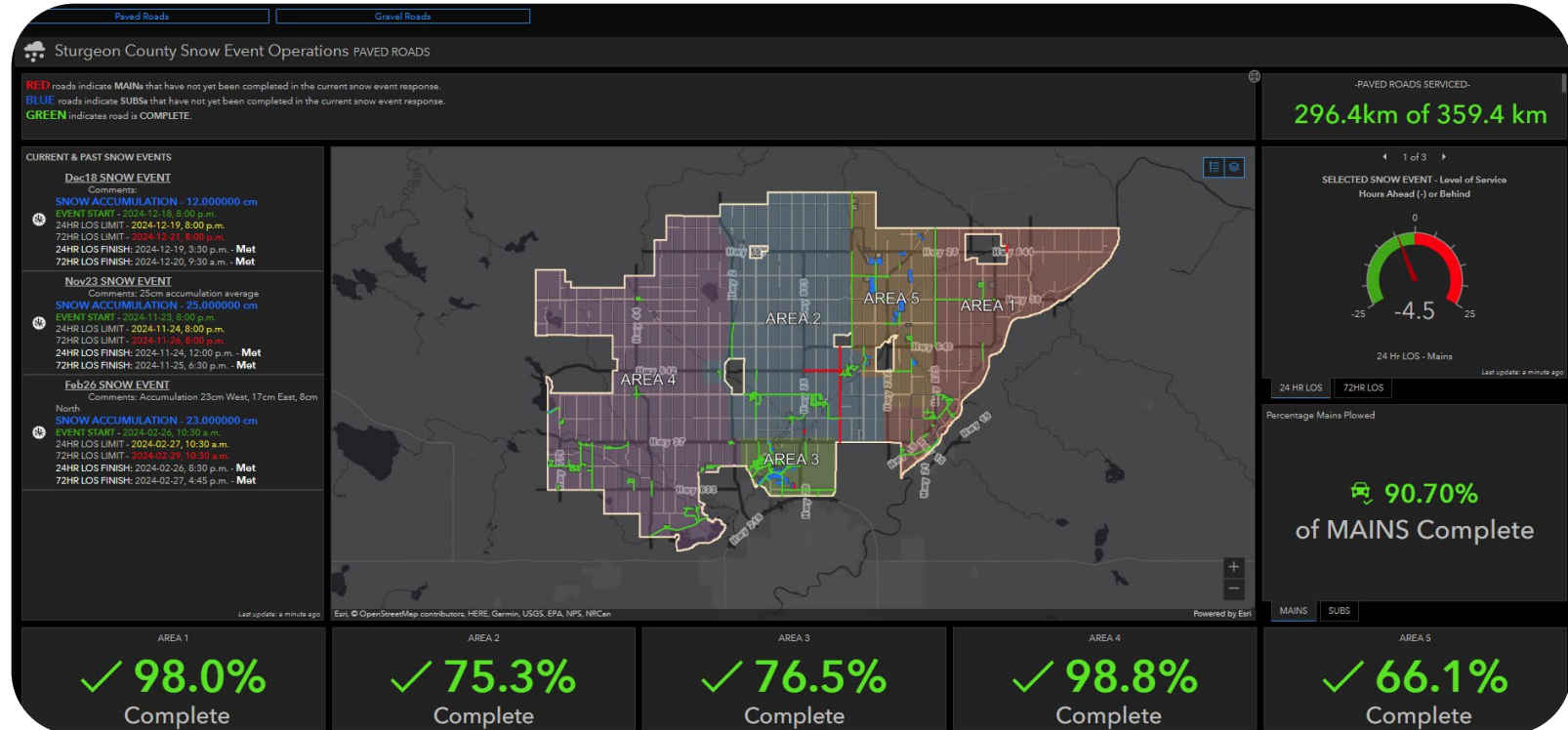


Rock Chip



Paved Roads Division – SNOW EVENT RESPONSE

1. 10cm+ Continuous Snow Accumulation reached
2. Crews and Management Notified
3. Transition to 24hr Operations upon substantial cessation of snowfall
4. Clear network within LOS timeframe – at least 2 lanes all roads
5. Progress tracked via Winter Operations Dashboard – Snow Event map
6. Upon completion, detail cleanup begins for both road network and parking lot routes



Paved Roads Division – Enhanced Maintenance Strategies

To continue streamlining the Snow and Ice Control program and provide better overall Paved Road conditions, the following are current and planned strategies undertaken by the department:

Snow Fence

1,607m between 7 locations currently in place with good results.

Sand Pre-wetting

7 of 8 trucks currently utilizing Beet 55 to prewet sand as discharged from sanding chute. Helps sand/salt to stick and reduces salt dilution period.

Tire Chains

Provides required traction during adverse freezing rain events to respond and place sand/salt as required. Chains available for all plow trucks.

Anti-Icing (Planned)

Preventing snow fall from bonding to the road surface significantly reduces the amount of sand/salt required to break the bond. Department is in the early stages of investigating this option using Beet 55.



Gravel Roads Division - Overview

Operations Supervisor – Jordan Kluthe : Field Supervisor – Nathan MacNevin

Gravel Network Snow and Ice Control

- The Gravel Road network is patrolled 5 days per week outside of Snow Events or other adverse conditions like freezing rain, regardless of road conditions.
- Focus on
 - Smoothing/ drivability
 - Creating traction (Intersections)
 - Blending snow and gravel to form ‘winter roads’



Gravel Roads Division – Equipment/Material Detail

EQUIPMENT

GRADERS

- 11 – 6-wheel drive units with telescoping wings, rear mounted scarifying teeth, and front lift groups to support blade/V-plow attachment
- 2 – spare to maintain full division coverage during preventive maintenance and repair



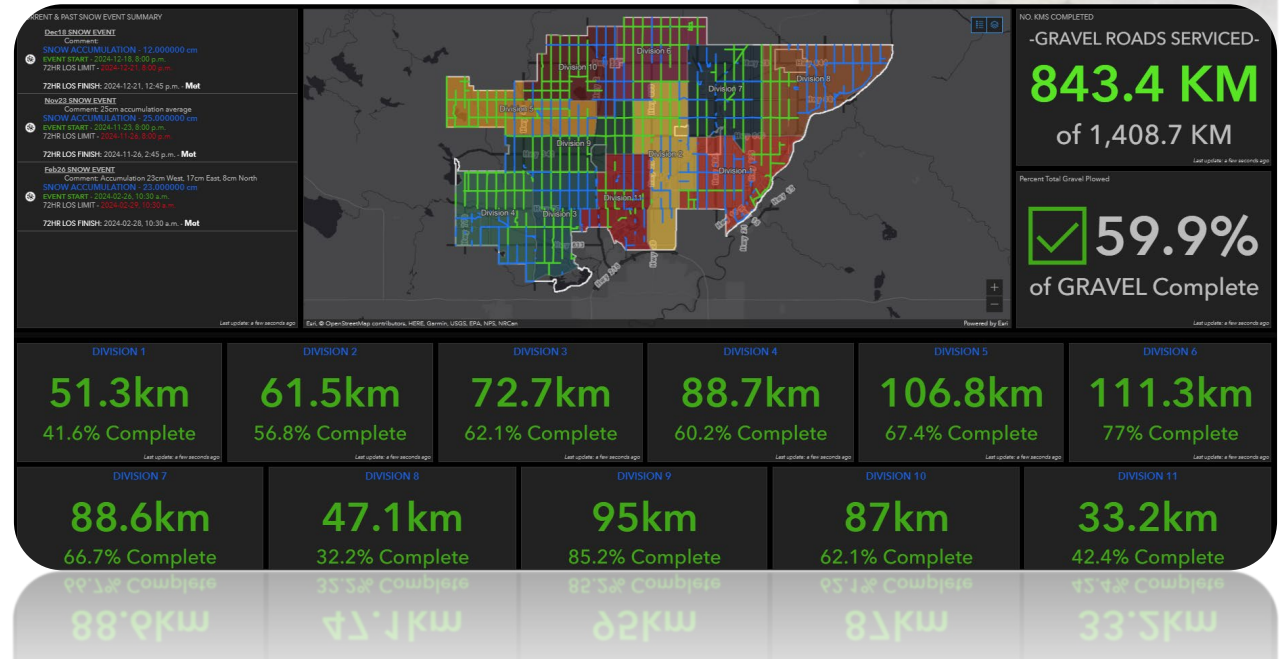
MATERIALS

- **Pickled 20mm** - stockpile and pickle **500t** per season
- Used to support rapid response to icy conditions at intersections, hills, and curves throughout the network due to thaw/freeze or freezing rain conditions
- Applied by sanding trucks via Paved Roads support as requested



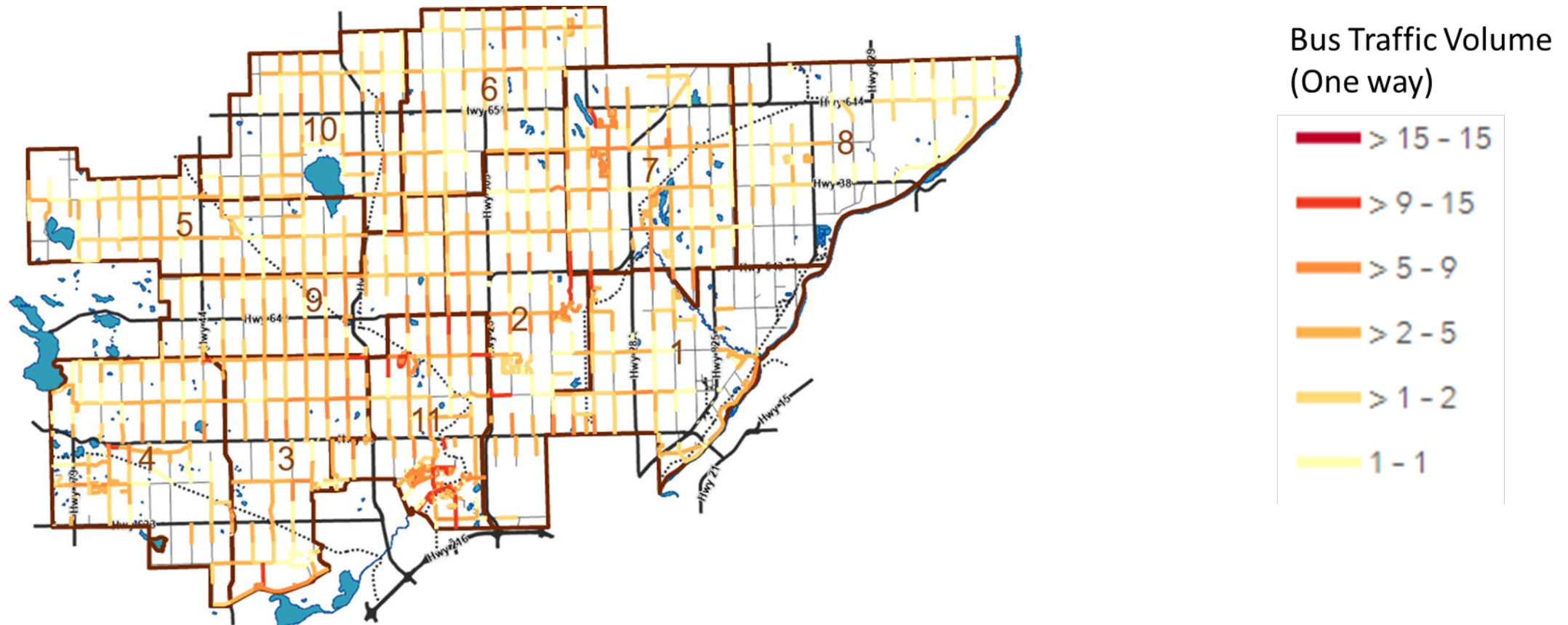
Gravel Roads Division - Snow Event Response

- Full deployment in response of a snow event. Extended hours as necessary to complete work and fatigue management
- On Gravel roads, best practice is to wait until snow has stopped (or almost stopped) before deploying
- Graders will deploy prior to snow stopping if forecasted accumulations are high
- Staff use the Snow Event Map (Tracking completion and accountability)
- Upon LOS completion, detail cleanup begins by benching, winging back, and pushing back high accumulation areas as needed.



Gravel Roads Division - Bus Routes

- A common misconception is that Sturgeon County employs a certain level of service for bus routes—that is not the case. In the last 3 years Sturgeon County has worked with the two primary school divisions to collect and map the bus routes, resulting in an awareness of the activity on certain roads



Gravel Roads Division - Drifting

- Wind events can often happen quickly and without much notice- resulting in several kilometers of roadways plugged overnight
- Like a Snow Event, it takes operators a minimum of 72 hours to pass through all roads (best case scenario - traveling in 6th gear)



2024/2025 – Snow Event Summary

PAVED ROADS

CURRENT & PAST SNOW EVENTS

Mar29 SNOW EVENT

Comments: Average 10cm reached

Mar 27 - snowfall ended Mar 29

SNOW ACCUMULATION - 20.000000 cm



EVENT START - 2025-03-29, 2:00 a.m.

24HR LOS LIMIT - **2025-03-30, 2:00 a.m.**

72HR LOS LIMIT - **2025-04-01, 2:00 a.m.**

24HR LOS FINISH: 2025-03-29, 1:30 p.m. -

Met

72HR LOS FINISH: 2025-03-30, 10:30 a.m. -

Met

Dec18 SNOW EVENT

Comments:

SNOW ACCUMULATION - 12.000000 cm



EVENT START - 2024-12-18, 8:00 p.m.

24HR LOS LIMIT - **2024-12-19, 8:00 p.m.**

72HR LOS LIMIT - **2024-12-21, 8:00 p.m.**

24HR LOS FINISH: 2024-12-19, 3:30 p.m. -

Met

72HR LOS FINISH: 2024-12-20, 9:30 a.m. -

Met

Nov23 SNOW EVENT

Comments: 25cm accumulation

average

SNOW ACCUMULATION - 25.000000 cm



EVENT START - 2024-11-23, 8:00 p.m.

24HR LOS LIMIT - **2024-11-24, 8:00 p.m.**

72HR LOS LIMIT - **2024-11-26, 8:00 p.m.**

24HR LOS FINISH: 2024-11-24, 12:00 p.m. -

Met

72HR LOS FINISH: 2024-11-25, 6:30 p.m. -

Met

SNOW EVENT RESPONSES

Three snow events in 2024/2025 Season

24HR LOS
12.5hrs ahead

72HR LOS
39.5hrs ahead

24HR LOS
4.5hrs ahead

72HR LOS
34.5hrs ahead

24HR LOS
8hrs ahead

72HR LOS
25.5hrs ahead

72HR LOS
13hrs ahead

72HR LOS
7.25hrs ahead

72HR LOS
5.25hrs ahead

GRAVEL ROADS

CURRENT & PAST SNOW EVENT SUMMARY

Mar29 SNOW EVENT

Comment: Average 10cm reached Mar 27 - snowfall ended Mar 29



SNOW ACCUMULATION - 20.000000 cm

EVENT START - 2025-03-29, 2:00 a.m.

72HR LOS LIMIT - **2025-04-01, 2:00 a.m.**

72HR LOS FINISH: 2025-03-31, 1:00 p.m. - **Met**

Dec18 SNOW EVENT

Comment:



SNOW ACCUMULATION - 12.000000 cm

EVENT START - 2024-12-18, 8:00 p.m.

72HR LOS LIMIT - **2024-12-21, 8:00 p.m.**

72HR LOS FINISH: 2024-12-21, 12:45 p.m. - **Met**

Nov23 SNOW EVENT

Comment: 25cm accumulation average



SNOW ACCUMULATION - 25.000000 cm

EVENT START - 2024-11-23, 8:00 p.m.

72HR LOS LIMIT - **2024-11-26, 8:00 p.m.**

72HR LOS FINISH: 2024-11-26, 2:45 p.m. - **Met**

Questions?



Sturgeon
C O U N T Y